

The background of the page is a photograph of a yellow AGI Westfield straight auger. The auger is mounted on a red trailer and is positioned in a field of green crops under a clear blue sky. The auger's boom is extended upwards and to the right, with the AGI logo visible on its side. The auger's hopper is red and yellow. The left side of the image is partially obscured by a green overlay that shows a close-up of the auger's internal components.

**AGI  WESTFIELD**  
***STRAIGHT AUGERS***





# GRAIN MOVING SOLUTIONS

AGI is a global leader in the handling and storage of grain. We got here by making it our mission to look beyond individual products and services, to view every step of the grain handling and storage process as part of an integrated whole. Our AGI Westfield® augers are examples of how our big-picture approach leads to innovation in safety, ease of handling and efficiency.

## FIND INSIDE:

---

- **W, WR & WRX**
- **STX<sup>2</sup>**
  - AWD or regular mover kit available
- **UTX**
  - U-trough auger
  - AWD mover kit available
- **Transfer augers**
- **Utility augers**





**2** YEAR LIMITED WARRANTY





# W

**13" DIAMETER**  
UP TO 7,800 BPH | 31' - 71' LENGTHS

# WR

**6" DIAMETER**  
UP TO 1,600 BPH | 26' - 61' LENGTHS

# WRX

**8" DIAMETER**  
UP TO 3,000 BPH | 31' - 76' LENGTHS

**10" DIAMETER**  
UP TO 4,800 BPH | 31' - 71' LENGTHS

## FEATURES

- **Hand winch with automatic brake**
  - W 13-51/61/71 come standard with hydraulic lift
- **Wear Edge Technology™ on intake flighting**
- **Sealed and lubricated top end**
- **Oil impregnated driveshaft bearings**
- **Gear boxes can be flipped for right or left hand PTO drive**
- **Flight connections built for proper alignment:**
  - W: Round connections
  - WR: Threaded connections
  - WRX: Round connections on 8" Square connections on 10"
- **Solid tube drive guard** (WRX only)
- **Adjustable chain tensioner** (WRX only)

## OPTIONS

- **Flex spout**  
W | WR | WRX
- **Hydraulic winch**  
W | WR | WRX
- **Swivel arc kits**  
WR | WRX
- **Wheel kit**  
W | WRX
- **Steel intake hoppers**  
W | WRX
- **Poly hoppers**  
W | WR | WRX
- **Enclosed collapsible hopper**  
W | WRX

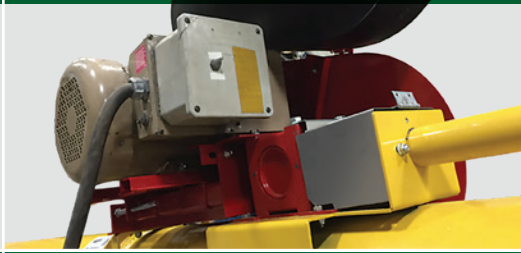


# DRIVE OPTIONS

**MOTOR DRIVE**  
WR up to 41' | WRX



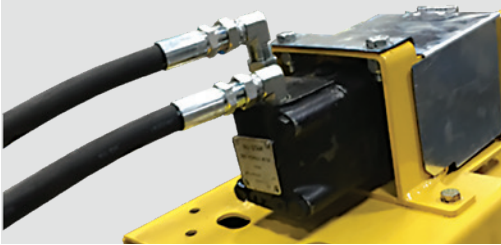
**ELECTRIC MOTOR DRIVE**  
W up to 41' | WR | WRX



**PTO SHAFT DRIVE**  
W | WR | WRX



**HYDRAULIC DRIVE**  
WR | WRX



**PTO BELT DRIVE**  
WR 36' - 41' | WRX



## HOPPER

### OPTIONS

- Steel intake hoppers
  - 36" long x 36" wide (WRX)
  - 40" long x 40" wide (W)
- Enclosed collapsible hopper

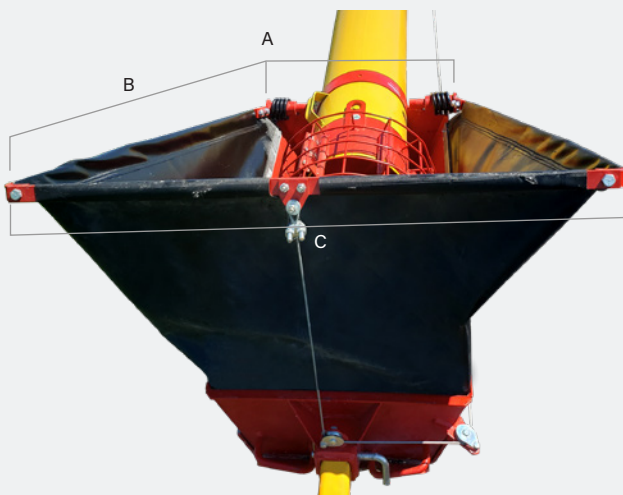
### ENCLOSED COLLAPSIBLE HOPPER SPECIFICATIONS

	8"	10"
<b>A</b>	16"	18.5"
<b>B</b>	36.5"	36.5"
<b>C</b>	33"	35.5"

	8"	10"
COLLAPSED HEIGHT	8"	9.5"
TOTAL HEIGHT	25.5"	27.5"

	13"
<b>A</b>	20.75"
<b>B</b>	36.5"

	13"
COLLAPSED HEIGHT	11"
TOTAL HEIGHT	29"



## WR | Find the right auger

WR	6-26	6-31	6-36	6-41	6-51	6-61
TUBE GAUGE	16 ga					
TUBE CONNECTORS	Heavy-duty 3/16" (0.5 cm) angle flange					
MAIN FLIGHTING	5 3/8" (13.7 cm) OD x 12 ga stretched and welded					
INTAKE FLIGHTING	1/4" (0.6 cm) welded with Wear Edge Technology lower pitch for high capacity					
FLIGHTING SHAFT	High strength 1.05" (2.7 cm) OD x 11 ga tubing					
DRIVESHAFT	1" (2.5 cm) OD x 12 ga tubing					
DRIVESHAFT BEARINGS	1" (2.5 cm) oil impregnated hardwood bearings					
TUBE TRUSSING	N/A			5/16" (0.8 cm) aircraft cable		
TRACK	High yield 11 ga roll formed					
TRACKSHOE	2 3/4" (7 cm) steel roller					
TRANSPORT/UNDERCARRIAGE	2" (5 cm) x 14 ga A-frame			2 1/2" (6.4 cm) x 14 ga A-frame		3" (7.6 cm) x 11 ga A-frame
HUBS & WHEELS	4-bolt agricultural type hubs, 15" (38.1 cm) wheels					
TIRES	15" (38.1 cm)					
LIFT CABLE	1/4" (0.6 cm) aircraft type galvanized steel cable					
TOP DRIVE	#50 roller chain and hardened steel sprockets					
TOP DRIVE BEARINGS	1" (2.5 cm) flangette sealed ball bearings					
WINCH	Reduction geared with automatic brake					
GEARBOX	Forged steel gears with tapered roller bearings					
CAPACITY - DRY WHEAT OR CORN, AUGER 1/2 RAISED	Up to 1,600 bph					

## W | Find the right auger

W	13-31	13-36	13-41	13-51	13-61	13-71
TUBE GAUGE	12 ga					
TUBE CONNECTORS	Heavy-duty 1/4" (0.6 cm) angle flange					
MAIN FLIGHTING	11 3/4" (29.8 cm) OD x 1/4" (0.6 cm) stretched and welded					
INTAKE FLIGHTING	10 ga welded with Wear Edge Technology lower pitch for high capacity					
FLIGHTING SHAFT	High strength 3" (7.6 cm) OD x 11 ga tubing					
DRIVESHAFT	1 1/4" (3.2 cm) OD solid driveshaft			1 1/2" (3.8 cm) OD solid driveshaft		
DRIVESHAFT BEARINGS	1 1/4" (3.2 cm) oil impregnated hardwood bearings			1 1/2" (3.8 cm) oil impregnated hardwood bearings		
TUBE TRUSSING	N/A			3/8" (0.9 cm) aircraft cable		
TRACK	High yield 11 ga roll formed			Double 2" (5.1 cm) x 1 1/2" (3.8 cm) x 3/16" (0.5 cm) angle iron		
TRACKSHOE	Single 2 3/4" (7 cm) steel roller			Double 3" (7.6 cm) steel roller		
TRANSPORT/UNDERCARRIAGE	3" (7.6 cm) x 11 ga A-frame			4" (10.2 cm) x 10 ga A-frame		
HUBS & WHEELS	4-bolt agricultural type hubs, 15" (38.1 cm) wheels			6-bolt agricultural type hubs, 15" (38.1 cm) wheels		
TIRES	15" (38.1 cm)					
LIFT CABLE	1/4" (0.6 cm) aircraft type galvanized steel cable			Double 5/16" (0.8 cm) aircraft type galvanized steel cable		
TOP DRIVE	#80 roller chain and hardened steel sprockets			#100 roller chain and hardened steel sprockets		
TOP DRIVE BEARINGS	Pillow block ball bearings with collar lock					
WINCH	Reduction geared with automatic break			Two 4" (10.2 cm) single acting cylinders		
GEARBOX	Forged steel gears with tapered roller bearings					
CAPACITY - DRY WHEAT OR CORN, AUGER 1/2 RAISED	Up to 7,800 bph					

HEIGHT | REACH | WHEEL

	A	B	C	D	E	F	G	H	I	
<b>WR</b>	HEIGHT LOWERED	HEIGHT HALFWAY	HEIGHT RAISED	REACH LOWERED	REACH HALFWAY	REACH RAISED	HEIGHT AT LIFTARMS	HEIGHT AT WHEELS	INTAKE REACH	WHEEL THREAD
26'	6' 5"	12' 8"	17' 11"	10' 9"	9' 5"	7' 3"	7' 9"	11' 4"	6' 10"	68"
31'	7' 8"	15' 1"	21' 6"	13' 9"	12' 0"	9' 3"	8' 10"	12' 10"	7' 8"	70"
36'	9' 0"	17' 4"	24' 10"	16' 3"	14' 3"	11' 2"	10' 0"	14' 4"	8' 11"	82"
41'	9' 7"	20' 2"	28' 7"	18' 8"	16' 4"	12' 8"	11' 6"	16' 4"	10' 2"	88"
51'	11' 11"	25' 0"	35' 0"	23' 1"	20' 2"	15' 10"	14' 2"	19' 11"	12' 10"	94"
61'	11' 8"	28' 4"	41' 0"	27' 4"	24' 4"	19' 0"	17' 2"	24' 3"	16' 2"	112"
<b>W</b>										
31'	7' 7"	13' 9"	19' 3"	13'	11' 9"	9' 8"	9'	12' 5"	8'	106"
36'	7' 10"	15' 4"	22' 1"	15'	14' 2"	12' 11"	9' 6"	12' 10"	11' 1"	106"
41'	10' 0"	19' 9"	28' 3"	16' 5"	14' 5"	11' 3"	—	—	—	94"
51'	10' 9"	21' 10"	35' 5"	22' 4"	20' 2"	15' 3"	—	—	—	112"
61'	11' 7"	25' 8"	41' 1"	27' 5"	24' 10"	20' 0"	—	—	—	118"
71'	12' 11"	30' 10"	47' 0"	32' 3"	29' 5"	23' 1"	—	—	—	124"

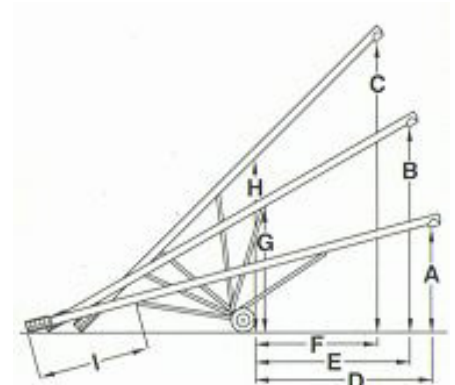
**Recommended pulley sizes:**

• Gas motor drives: 4.2" double groove pulley • Electric motor drives: WR: 7.75" double groove pulley | W: 4 - 4.3" triple groove pulley

**HORSEPOWER REQUIREMENTS**

	6"			13"	
	GAS HP	PTO HP	ELEC. HP	PTO HP	ELEC. HP
26'	10	—	3	—	—
31'	10	—	3	40	20
36'	12	—	3	40 - 50	20 - 25
41'	12	—	3	50	25
51'	—	20	5	70	—
61'	—	25	7.5	80	—
71'	—	—	—	90	—

**Disclaimer:** The WR and W series augers were proudly designed to handle dry, free-flowing grains up to a maximum density of 65 lb/bu (52 lb/cf). Any usage of these augers outside of this is not authorized.



Heights measured from bottom of auger spout to ground.

## WRX 8 | Find the right auger

WRX 8	8-31	8-36	8-41	8-46	8-51	8-56	8-61	8-71	8-76
TUBE GAUGE	14 ga								
TUBE CONNECTORS	Heavy-duty 3/16" (0.5 cm) angle flange								
MAIN FLIGHTING	7" (17.8 cm) OD x 10 ga stretched and welded								
INTAKE FLIGHTING	10 ga welded with Wear Edge Technology								
FLIGHTING SHAFT	High strength 1.66" (4.2 cm) OD x 11 ga Tubing								
DRIVESHAFT	1 1/4" (3.2 cm) OD x 11 ga tubing								
DRIVESHAFT BEARINGS	1 1/4" (3.2 cm) oil impregnated hardwood bearings								
TUBE TRUSSING	N/A			5/16" (2.1 cm) aircraft cable					
TRACK	High yield 11 ga roll formed								
TRACKSHOE	Single 2 3/4" (7 cm) steel roller								
TRANSPORT/UNDERCARRIAGE	2 1/2" (6.4 cm) x 14 ga A-frame			3" (7.6 cm) OD x 11 ga A-frame					
AXLE	2" (5.1 cm) x 11 ga tubing			2 1/2" (6.4 cm) x 1/8" (0.3 cm) wall square tubing					
HUBS & WHEELS	4-bolt agricultural type hubs, 15" (38.1 cm) wheels								
TIRES	15" (38.1 cm) agricultural tires								
LIFT CABLE	1/4" (0.6 cm) aircraft type galvanized steel cable								
TOP DRIVE	#80 roller chain and hardened steel sprocket								
TOP DRIVE BEARINGS	1 1/4" (3.2 cm) pillow block								
WINCH	Reduction geared with automatic brake								
GEARBOX	Formed steel gears with tapered roller bearings								
CAPACITY - DRY WHEAT OR CORN, AUGER 1/2 RAISED	Up to 3,000 bph								

## WRX 10 | Find the right auger

WRX 10	10-31	10-36	10-41	10-51	10-61	10-71
TUBE GAUGE	12 ga					
TUBE CONNECTORS	Heavy-duty 3/16" (0.5 cm) angle flange					
MAIN FLIGHTING	9" (22.9 cm) OD x 7 ga stretched and welded					
INTAKE FLIGHTING	10 ga welded with Wear Edge Technology lower pitch for high capacity					
FLIGHTING SHAFT	High strength 2" (5.1 cm) OD x 11 ga tubing					
DRIVESHAFT	1 1/4" OD x 11 ga tubing					
DRIVESHAFT BEARINGS	1 1/4" (3.2 cm) oil impregnated hardwood bearings					
TUBE TRUSSING	N/A			5/16" (0.8 cm) aircraft cable		
TRACK	High yield 11 ga roll formed					
TRACKSHOE	Single 2 3/4" (7 cm) steel roller					
TRANSPORT/UNDERCARRIAGE	2 1/2" (6.4 cm) x 14 ga A-Frame			3" (7.6 cm) OD x 11 ga A-frame		
AXLE	2" (5.1 cm) x 11 ga tubing			2 1/2" (6.4 cm) x 1/8" (0.3 cm) wall square tubing		
HUBS & WHEELS	4-bolt agricultural type hubs, 15" (38.1 cm) wheels					
TIRES	15" (38.1 cm) agricultural tires					
LIFT CABLE	1/4" (0.6 cm) aircraft type galvanized steel cable					
TOP DRIVE	#80 roller chain and hardened steel sprockets					
TOP DRIVE BEARINGS	1 1/4" (3.2 cm) pillow block					
WINCH	Reduction geared with automatic brake					
GEARBOX	Formed steel gears with tapered roller bearings					
CAPACITY - DRY WHEAT OR CORN, AUGER 1/2 RAISED	Up to 4,800 bph					

**Disclaimer:** The WRX series auger was proudly designed to handle dry, free-flowing grains up to a maximum density of 65 lb/bu (52 lb/cf). Any usage of this auger outside of this is not authorized.

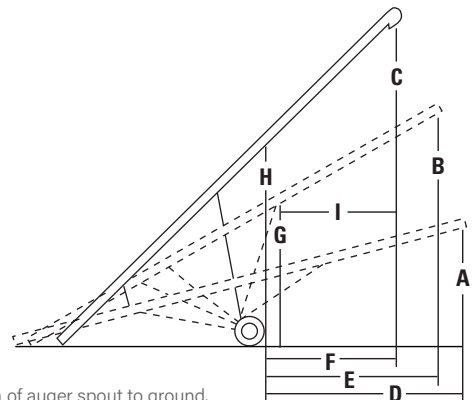


HEIGHT | REACH | WHEEL

	A	B	C	D	E	F	G	H	I	
	HEIGHT LOWERED	HEIGHT HALFWAY	HEIGHT RAISED	REACH LOWERED	REACH HALFWAY	REACH RAISED	HEIGHT AT LIFTARMS	HEIGHT AT WHEELS	REACH TO LIFTARMS	WHEEL THREAD
31'	8' 1"	14' 9"	20' 9"	12' 7"	11' 4"	9' 4"	8' 9"	12' 5"	9' 7"	70"
31' MD	8' 1"	11' 10"	15' 6"	12' 7"	12' 0"	11' 5"	7' 8"	9' 3"	9' 3"	70"
36'	9' 8"	17' 9"	24' 7"	15' 9"	13' 2"	10' 1"	10' 8"	15' 6"	9' 7"	88"
36' MD	9' 8"	15' 1"	18' 2"	15' 9"	14' 2"	13' 0"	9' 9"	9' 9"	10' 8"	88"
36' BD	10' 11"	17' 8"	24' 6"	14' 8"	13' 1"	10' 9"	11' 1"	15' 3"	10' 5"	88"
41'	10' 4"	20' 3"	29' 1"	17' 9"	15' 11"	12' 9"	11' 6"	16' 4"	12' 9"	88"
41' MD	10' 4"	15' 0"	20' 3"	17' 9"	17' 2"	15' 11"	9' 9"	11' 9"	13' 1"	88"
41' BD	11' 7"	20' 6"	28' 5"	17' 0"	15' 5"	12' 7"	11' 9"	16' 5"	12' 7"	88"
46'	10' 5"	20' 10"	31' 3"	19' 5"	16' 0"	11' 1"	13' 9"	19' 0"	9' 3"	106"
46' BD	11' 5"	22' 6"	31' 5"	17' 9"	15' 10"	12' 8"	14' 5"	19' 9"	11' 8"	106"
51'	10' 5"	24' 8"	35' 0"	22' 1"	19' 7"	16' 5"	14' 3"	19' 0"	18' 0"	106"
51' BD	11' 11"	24' 8"	35' 6"	21' 7"	19' 7"	15' 10"	14' 6"	20' 4"	15' 0"	106"
56'	11' 5"	25' 1"	37' 5"	26' 5"	22' 7"	17' 2"	15' 6"	22' 2"	13' 8"	112"
61'	11' 0"	27' 9"	40' 1"	26' 6"	22' 6"	18' 7"	16' 7"	22' 8"	20' 10"	112"
71'	12' 4"	30' 10"	46' 5"	31' 3"	28' 2"	22' 9"	19' 1"	26' 10"	24' 6"	118"
76'	10' 10"	29' 1"	45' 5"	33' 9"	31' 7"	27' 10"	18' 3"	24' 9"	26' 2"	118"

HORSEPOWER REQUIREMENTS

	8"				10"			
	GAS HP	PTO HP	EMD HP	HYD	GAS HP	PTO HP	EMD HP	HYD
31'	16	15	5	22 GPM @ 2200 psi	18 - 20	30	7.5 - 10	22 GPM @ 2200 psi
36'	16 - 18	15	5 - 7.5	22 GPM @ 2200 psi	22 - 25	35	10 - 15	22 GPM @ 2200 psi
41'	18 - 20	20	5 - 7.5	22 GPM @ 2200 psi	22 - 25	40	10 - 15	22 GPM @ 2200 psi
46'	—	25	7.5	—	—	—	—	—
51'	—	25	10 - 15	—	—	45	15 - 20	—
56'	—	30	15	—	—	—	—	—
61'	—	35	15 - 20	—	—	55	20	—
71'	—	45	20	—	—	60	20 - 25	—
76'	—	50	20 - 25	—	—	—	—	—



Heights measured from bottom of auger spout to ground.

## FEATURES

- Wear Edge Technology on intake flighting
- Banded belts
- Self-leveling motor mount
- Easily accessible fuel tank location
- 45L (12Gal) fuel tank
- Sealed and lubricated top end
- Adjustable chain tensioner
- Mover kits
  - Self-propelled AWD mover kit with steel hydraulic lines
  - Self-propelled two wheel mover kit

## OPTIONS

- Reversing gearbox
- Poly flex spout
- LED working lights
- Poly hopper
- Steel intake hopper
- Enclosed hopper
- Electric clutch
  - Double groove clutch up to 41'
  - Triple groove clutch 46' and 51'

# STX<sup>2</sup>

**8" DIAMETER**  
UP TO 3,500 BPH | 31' - 51' LENGTHS

**10" DIAMETER**  
UP TO 5,500 BPH | 31' - 51' LENGTHS





## STX<sup>2</sup> | Find the right auger

STX <sup>2</sup>	8-31	8-36	8-41	8-46	8-51	10-31	10-36	10-41	10-46	10-51
TUBE GAUGE	14 ga					12 ga				
TUBE CONNECTORS	Heavy-duty 3/16" (0.5 cm) angle flange									
MAIN FLIGHTING	7" (17.8 cm) OD x 10 ga stretched and welded					9" (22.9 cm) OD x 7 ga stretched and welded				
INTAKE FLIGHTING	10 ga welded with Wear Edge Technology lower pitch for high capacity									
FLIGHTING SHAFT	High strength 1.66" (4.2 cm) OD x 11 ga tubing					High strength 2" (5.1 cm) OD x 11 ga tubing				
DRIVESHAFT	1 1/4" (3.2 cm) OD x 11 ga tubing									
DRIVESHAFT BEARINGS	1 1/4" (3.2 cm) oil impregnated hardwood bearings									
TUBE TRUSSING	N/A	N/A	N/A	N/A	5/16" (0.8 cm) aircraft galv. steel cable	N/A	N/A	N/A	N/A	5/16" (0.8 cm) aircraft cable
TRACK	High yield 11 ga roll formed									
TRACKSHOE	2 3/4" (7 cm) square tubing									
UNDERCARRIAGE	2 1/2" (6.4 cm) square tubing (upper), 3" (7.6 cm) square tubing (lower)			3" (7.6 cm) square tubing		2 1/2" (6.4 cm) square tubing (upper), 3" (7.6 cm) square tubing (lower)			3" (7.6 cm) square tubing	
AXLE	2 1/2" (6.4 cm) square tubing									
HUBS & WHEELS	4-bolt agricultural type hubs, 15" (38.1 cm) wheels									
TIRES	15" (38.1 cm) agricultural tires									
LIFT CABLE	1/4" (0.6 cm) aircraft type galvanized steel cable									
TOP DRIVE	#80 roller chain and hardened steel sprockets									
TOP DRIVE BEARINGS	1 1/4" (3.2 cm) cast flange									
WINCH	Reduction geared with automotive brake									
GEARBOX	Formed steel gears with tapered roller bearings									
WHEEL TREAD	96" (243.8 cm)									
GAS HORSEPOWER	16	16 - 18	18 - 20	22 - 25	25 - 30	25	25 - 30	30 - 35	35 - 38	35 - 36
ELECTRIC HORSEPOWER	5	5 - 7 1/2	5 - 7 1/2	7 1/2	10 - 15	15	15	15	15	15

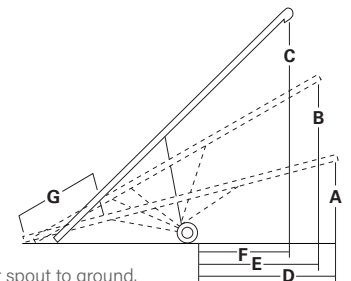
**Disclaimer:** The STX<sup>2</sup> series auger was proudly designed to handle dry, free-flowing grains up to a maximum density of 65 lb/bu (52 lb/cf). Any usage of this auger outside of this is not authorized.

### Recommended pulley sizes:

- Gas motor drives: 4.2" • Electric motor drives: 7.5"
- 8-31 to 10-41 double groove pulley | 10-46 to 10-51 triple groove pulley

### HEIGHT | REACH | WHEEL

	A	B	C	D	E	F	G
	HEIGHT LOWERED	HEIGHT HALFWAY	HEIGHT RAISED	REACH LOWERED	REACH HALFWAY	REACH RAISED	INTAKE REACH
8-31	8' 6"	13' 6"	18' 10"	12' 6"	12' 2"	11' 7"	8' 5"
8-36	9'	15' 8"	22' 1"	14' 6"	14' 1"	13' 2"	10'
8-41	8' 4"	16' 4"	24' 6"	16' 9"	16' 5"	15' 9"	12' 1"
8-46	10'	17'	26' 1"	18' 6"	18' 4"	17' 3"	14' 10"
8-51	10' 6"	19' 9"	29'	19' 3"	18' 7"	17' 7"	16' 1"
10-31	8' 6"	13' 6"	18' 10"	12' 6"	12' 2"	11' 7"	8' 7"
10-36	9'	15' 8"	22' 1"	14' 6"	14' 1"	13' 2"	10' 2"
10-41	8' 4"	16' 4"	24' 6"	16' 9"	16' 5"	15' 9"	12' 3"
10-46	10'	17'	26' 1"	18' 6"	18' 4"	17' 3"	14' 11"
10-51	10' 6"	19' 9"	29'	19' 3"	18' 7"	17' 7"	16' 3"



Heights measured from bottom of auger spout to ground.



## FEATURES

- 40HP Vanguard EFI engine
- Triple-groove electric clutch
- Wear Edge Technology on intake flighting
- Solid driveline guard
- Triple banded belts
- Sealed and lubricated top end
- Adjustable chain tensioner
- Collapsing spring loaded hopper
- Reversing gearbox
- Self-propelled AWD mover with steel hydraulic lines
- LED work lights

# UTX

**11" U-TROUGH AUGER**  
**UP TO 9,000 BPH | 44' LENGTH**





# UTX

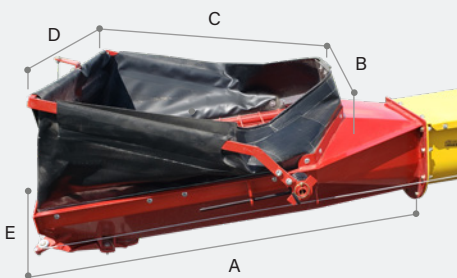
## UTX

TROUGH GAUGE	12 ga
TROUGH CONNECTORS	¼" (0.6 cm) flange
MAIN FLIGHTING	10" (25.4 cm) OD x 7 ga stretched and welded
INTAKE FLIGHTING	10" (25.4 cm) OD x 7 ga welded with Wear Edge Technology
FLIGHTING SHAFT	2" (5.1 cm) OD x 0.120" (0.3 cm) wall tubing
DRIVESHAFT	1 ½" (3.8 cm) OD x 10 ga tubing
DRIVESHAFT BEARINGS	1 ½" (3.8 cm) oil impregnated hardwood bearings
TRACK	High yield 11 ga roll formed
TRACK SHOE	2 ⅜" (6 cm) steel roller
UNDERCARRIAGE	3" (7.6 cm) square tubing
AXLES	2 ½" (6.4 cm) square tubing
HUB & WHEELS	4-bolt agricultural type hubs, 15" (38.1 cm) wheels
LIFT CABLE	¼" (0.6 cm) aircraft type galvanized steel cable
TIRES	15" (38.1 cm) agricultural tires
BELT SIZE	3B270
TOP DRIVE	#80 roller chain and hardened steel sprockets
TOP DRIVE BEARINGS	1 ¼" (3.2 cm) pillow block
WINCH	Reduction gear with automatic brake
GEARBOX	Formed steel gears with tapered roller bearings
WHEEL TREAD	96" (243.8 cm)
GAS HORSEPOWER	40
CAPACITY	7,000 - 9,000 bph

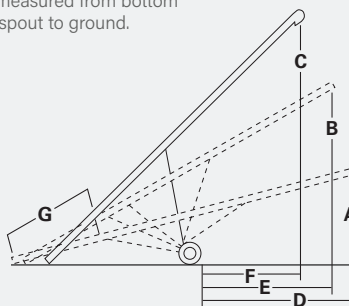
**Disclaimer:** The UTX series auger was proudly designed to handle dry, free-flowing grains up to a maximum density of 65 lb/bu (52 lb/cf). Any usage of this auger outside of this is not authorized.

# HOPPER

## SPECIFICATIONS



Heights measured from bottom of auger spout to ground.



DISCHARGE CLEARANCE DIMENSIONS		TRANSPORT DIMENSIONS	
MIN	9' 6"	LENGTH	45' 6"
MAX	18' 1"	WIDTH	8'
HEIGHT	10' 6"	HEIGHT	10' 8"

HOPPER DIMENSIONS	
A - HOPPER LENGTH	37 ½"
B - HOPPER WIDTH	29 ¾"
C - CANVAS OPENING LENGTH	34 ⅙"
D - CANVAS OPENING WIDTH	37 ¾"
E - COLLAPSED HEIGHT	15 ⅝"

A	9' 2"
B	13' 9"
C	18' 4"
D	14' 10"
E	15'
F	14' 7"
G	11'

WEIGHT	
HITCH WEIGHT (W/ ENGINE)	472 lbs
TOTAL WEIGHT (W/ ENGINE)	3,058 lbs
HEIGHT	10' 6"

# TRANSFER AUGERS

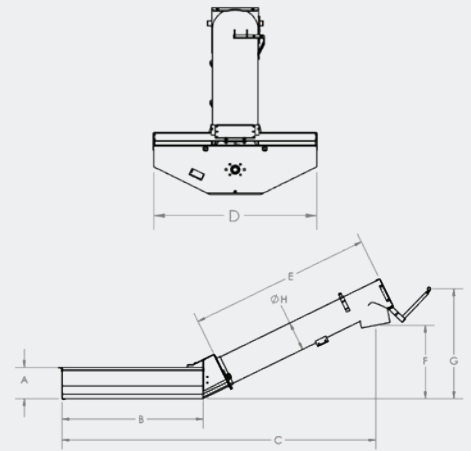
Transfer augers are available in 8" and 10" diameters with option of gas, electric or hydraulic drive. These low-profile transfers are just 10 ¾" high and are light and maneuverable. The transfer hopper fits nicely under a variety of grain storage options and trailers for fast and easy unloading.

## DRIVE OPTIONS

- Electric drive available on 8" and 10"
- Hydraulic drive available on 8" as single drive and on 10" as double drive
- Gas drive available on 8" and 10"
- All transfer augers are shipped complete with undercarriage

*Electric and gas motor and motor pulley not included*

*Hydraulic hoses to the tractor not included*



## Transfer Augers

	A	B	C	D	E	F	G	H			
	HOPPER HEIGHT	HOPPER LENGTH	TOTAL LENGTH	HOPPER WIDTH	TUBE LENGTH	SPOUT HEIGHT	HANDLE HEIGHT	TUBE DIAMETER	ELEC. HP REQ	GAS HP REQ	HYD REQ
8"	10 ¾"	48"	105"	35 ¾"	60"	25 ⅝"	36 ⅝"	8"	3 hp	5.5 hp	10 GPM, 650 psi
10"	10 ¾"	48"	105"	35 ¾"	60"	25"	37 ½"	10"	5 hp	7.5 hp	10 GPM, 1000 psi

	8" ELEC.	8" HYD.	8" GAS	10" ELEC.	10" HYD.	10" GAS
WEIGHT WITH DRIVE	365 lb	237 lb	335 lb	410 lb	285 lb	395 lb
WEIGHT NO DRIVE	275 lb	N/A	300 lb	310 lb	N/A	320 lb

	8" ELEC.	8" HYD.	8" GAS	10" ELEC.	10" HYD.	10" GAS
HANDLE FORCE BALANCE	40 lb	16 lb	26 lb	45 lb	32 lb	30 lb

**Disclaimer:** These augers were proudly designed to handle dry, free-flowing grains up to a maximum density of 65 lb/bu (52 lb/cf). Any usage of these augers outside of this is not authorized.

### Recommended pulley sizes:

- Gas motor drives: 8": 3" - 4" | 10": 3" • Electric motor drives: 3" - 4"



# UTILITY AUGERS

4", 6", 8", 10" AND 13" DIAMETERS IN VARIOUS LENGTHS

- For permanent or semi-permanent auger installations
- Can be used at grain bins or bulk tanks
- 4" - 11' basic auger, 5' or 10' extension
- 6" | 8" | 10" - 16' basic auger, 5', 10' or 15' extension
- 13" - 21' basic auger, 5' or 10' extension

*Electric motor, pulley and switches not included*

## FEATURES

- **Upper drive adjustable motor mount**
  - 4" shielded single "A" belt and pulley with pre-lubricated top end bearing
  - 6" | 8" | 10" double "B" belts and pulley with heavy-duty flangette ball bearing
  - 13" triple "B" belts and pulley with heavy-duty flangette ball bearing
- **Shielded intake assembly bolts to basic drive section or extension**

## OPTIONS

- **Truss kits to support longer auger installations (6", 8" and 10" models)**
- **Bolt-on tube clamps for attaching support bracing**
- **Bolt-on flight support bushing with grease fitting (standard on 13" models)**
- **Handy steel hopper with flight support bearing**
  - Available with hinged lid for 6" and 10" models
- **Flex spout**
- **Poly hopper**
- **Triple groove pulley (comes with 3-belts for long 10" augers)**
- **Adjustable feed control**
- **Handy swivel mount bracket for quick mounting to truck box, wagon or feed bin**

### Utility Augers

	4"	6"	8"	10"	13"
RECOMMENDED PULLEY SIZE FOR 1,750 RPM MOTORS	1A 2" - 2 ¼"	2B 3 ½" - 4"	2B 3 ¼" - 3 ½"	2B 3 ¼" - 3 ½"	3B 3 ¼" - 3 ½"
FLIGHT SPEED	440 - 490 RPM	480 - 550 RPM	445 - 480 RPM	380 - 410 RPM	355 - 380 RPM
AUGER PULLEY SUPPLIED	1A 8"	2B 12.7"	2B 12.7"	2B 15"	3B 16"
BELT(S) SUPPLIED	1 - A33	2 - B48	2 - B 51	2 - B 62	3 - B 67
EXTENSIONS AVAILABLE	5', 10'	5', 10', 15'	5', 10', 15'	5', 10', 15'	5', 10', 20'
TUBE GAUGE	16 ga	16 ga	14 ga	12 ga	12 ga
FLIGHT GAUGE	13 ga	12 ga	10 ga	7 ga	¼"

**Note:** For intermittent feed, a slightly smaller pulley will allow easier startup under load.

### HORSEPOWER REQUIREMENTS

	4"	6"	8"	10"	13"
11"	¾	—	—	—	—
16' - 21'	¾ - 1	1½ - 2	3	3 - 5	10
26' - 31'	1 - 1½	3	5	5 - 7½	15
36' - 41'	1½ - 2	3 - 5	5 - 7½	7½ - 10	20
46' - 51'	2 - 3	5	7½ - 10	10 - 15	—
56' - 61'	—	7½	10	15 - 20	—



AGI is a global leader in supplying farm and commercial customers with the manufacturing, planning, and engineering of full equipment solutions for grain, seed, fertilizer, feed, and food. AGI's expertise enables the storage, blending, mixing, conveying, conditioning, processing, and protection of agricultural products and inputs worldwide.

**Your safety is our highest priority.**

Please read and understand the operator's manual and safety decals before using. Use and maintain products properly, and do not modify. Keep guards in place when operating and follow all product manuals and safety decals. For all AGI products, if guards, safety decals, or manuals are damaged or missing, contact your AGI sales or dealer representative for replacements. Images and information contained in this brochure are presented for general information.

Westfield, AGI and the rolling hills logo are trademarks of Ag Growth International Inc.

198 Commerce Drive, Winnipeg, Manitoba, Canada R3P 0Z6

P 1.855.432.1990 | [csr.portable@aggrowth.com](mailto:csr.portable@aggrowth.com) | [aggrowth.com/westfield](http://aggrowth.com/westfield)

     @aggrowthintl

**AGGROWTH.COM**