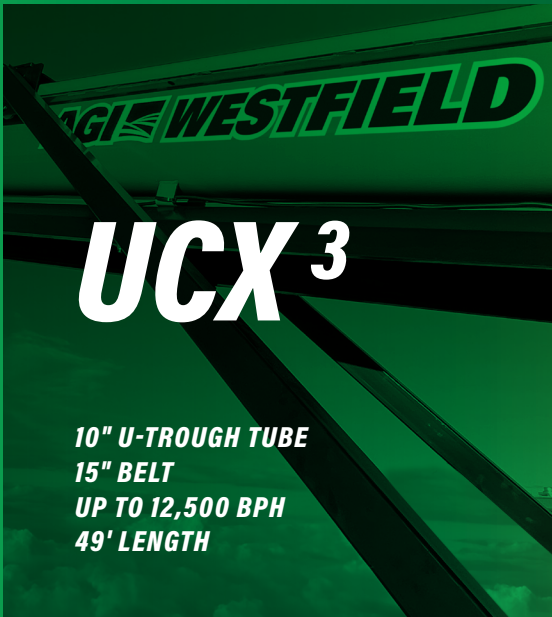




AGI  WESTFIELD

***BELT CONVEYORS
AND ACCESSORIES***





UCX³

10" U-TROUGH TUBE
15" BELT
UP TO 12,500 BPH
49' LENGTH

FEATURES

- All grain commodity system suitable for all seed types, including oil seeds
- Easy to use spray and run wash system removes debris and residue on the back side of the belt from tough to wash commodities
- Two belt scrapers and one belt brush come standard helping to keep your belt clean
- Two-year limited warranty
- Ergonomic command center controls electric throttle, lights, start/stop, hydraulics, and electric clutch, with joystick steer for mover kit hydraulics
- Hopper with urethane seals, a stiffened hopper cloth, urethane flashing, and a 32" parallel width for the full working length
- S-drive with pinch roller helps prevent over-tightening
- Sealed, straight down spout allows you to center trucks under the unit
- Straight down spout eliminates the need for additional down spout, so conveyor can stay at a lower working angle, increasing capacity
- Sealed edge belt limits leakage
- 40 HP EFI Vanguard motor and triple banded drive belts with spring loaded tensioners

MOVER KIT FEATURES

- Adds an extra 15" of discharge height when compared to previous models
- All wheel drive
- 160° turning radius for tight yards

UCX ³	
PRODUCT LINE	UCX ³ 1549 FMD W/HANGING GAS
CAPACITY	Up to 12500 bph
TUBE GAUGE	Formed 12 ga laser cut U-trough
BELT TYPE	15" wide Direct-X
BELT LENGTH	110' 8"
LIFT	Hydraulic winch
FRAME TYPE	A-frame
AXLE	2 1/2" sq. x .125"
HUB	4-bolt on 5.0", 3.62" pilot
TIRES	4-bolt ST205/75D15
PARKING JACK	7000 lbs rating, top twist 2 1/2" receiver, 25" travel
HOPPER DIMENSIONS	65 13/16" length x 31 1/4" width x 17 3/8" height
HP REQUIRED (WITH DRY WHEAT)	Vanguard 40 HP EFI
CONVEYOR WIDTH (HUB FACE TO FACE)	83.25"
CONVEYOR WEIGHT	4100 lbs

SPECIFICATIONS

	HEIGHT LOWERED	HEIGHT HALFWAY	HEIGHT RAISED	REACH LOWERED	REACH HALFWAY	REACH RAISED	HEIGHT AT LIFT ARMS HALFWAY	HEIGHT AT WHEELS RAISED	REACH AT LIFT ARMS HALFWAY	REACH AT WHEELS RAISED
UCX ³ 1549 FMD W/HANGING GAS	9' 6" (2.9 m)	16' 2" (4.928 m)	20' 10.75" (6.369m)	24' 0.25" (7.322 m)	23' 8.25" (7.22 m)	23' 5.25" (7.169 m)	10' 1.5" (3.086 m)	11' 5.75" (3.499 m)	20' 0.25" (6.102 m)	22' 4.75" (6.826 m)

Heights measured from bottom of conveyor spout to ground.



AWD MOVER KIT



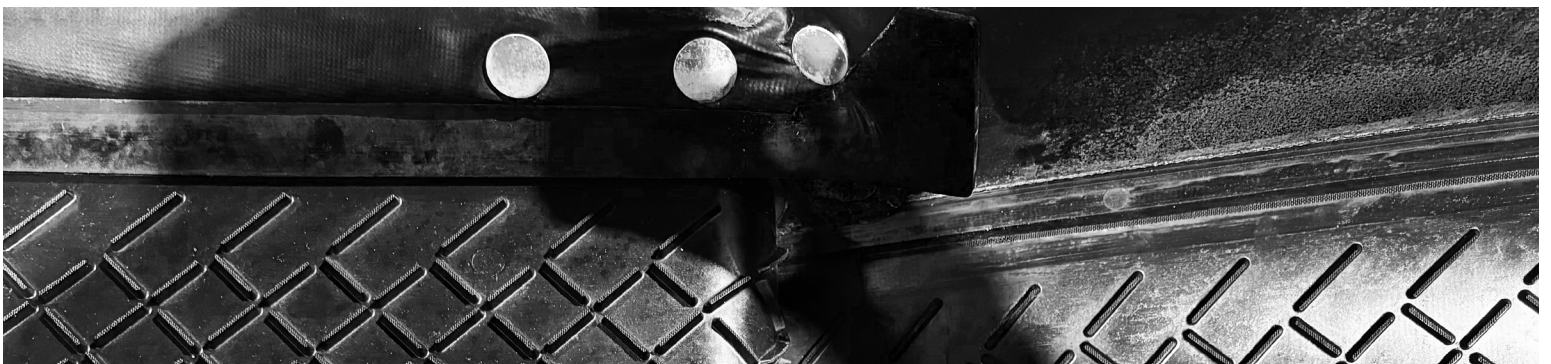
AWD MOVER KIT



COMMAND CENTER



MOTOR AND BELT DRIVES



BELT SEAL AND TEXTURE

WCX³

**10" TUBE
15" BELT
UP TO 10,000 BPH
49' LENGTH**



FEATURES

- All grain commodity system suitable for all seed types, including oil seeds
- Easy to use spray and run wash system removes debris and residue on the back side of the belt from tough to wash commodities
- Two belt scrapers and one belt brush come standard helping to keep your belt clean
- Two-year limited warranty
- Ergonomic command center controls electric throttle, lights, start/stop, hydraulics, and electric clutch, with joystick steer for mover kit hydraulics
- Hopper with urethane seals, a stiffened hopper cloth, urethane flashing, and a 32" parallel width for the full working length
- S-drive with pinch roller helps prevent over-tightening
- Sealed, straight down spout allows you to center trucks under the unit
- Straight down spout eliminates the need for additional down spouts, so conveyor can stay at a lower working angle, increasing capacity
- Motor available in both top mount (TM) or under mount (UM)

MOVER KIT FEATURES

- Adds an extra 15" of discharge height when compared to previous models
- All wheel drive
- 160° turning radius for tight yards

WCX³

PRODUCT LINE	WCX ³ 1549 FMD
CAPACITY	Up to 10000 bph
TUBE GAUGE	10" OD x 12 ga
BELT TYPE	15" wide chevron
BELT LENGTH	110' 8"
LIFT	Hydraulic winch
FRAME TYPE	A-frame
AXLE	2 1/2" sq. x .125"
HUB	4-bolt on 5.0", 3.62" pilot
TIRES	4-bolt ST205/75D15
PARKING JACK	7000 lbs rating, top twist, 2 1/2" receiver, 25" travel
HOPPER DIMENSIONS	64 7/8" length x 30 3/4" width x 17 1/4" height
HP REQUIRED (WITH DRY WHEAT)	Vanguard 37 HP EFI
CONVEYOR WIDTH (HUB FACE TO FACE)	83.75"
CONVEYOR WEIGHT	3800 lbs

SPECIFICATIONS

	HEIGHT LOWERED	HEIGHT HALFWAY	HEIGHT RAISED	REACH LOWERED	REACH HALFWAY	REACH RAISED	HEIGHT AT LIFT ARMS HALFWAY	HEIGHT AT WHEELS RAISED	REACH AT LIFT ARMS HALFWAY	REACH AT WHEELS RAISED
WCX ³ 1549 FMD	9' 6" (2.899 m)	16' 1.750" (4.921 m)	20' 10.5" (6.363 m)	24' (7.315 m)	23' 8" (7.213 m)	23' 6.25" (7.169 m)	10' 1.5" (3.086 m)	11' 5.5" (3.493 m)	20' 0.25" (6.102 m)	22' 3.75" (6.801 m)

Heights measured from bottom of conveyor spout to ground.



UNDER MOUNT (UM) MOTOR OPTION



COMMAND CENTER



MOTOR AND BELT DRIVES



BELT SEAL AND TEXTURE

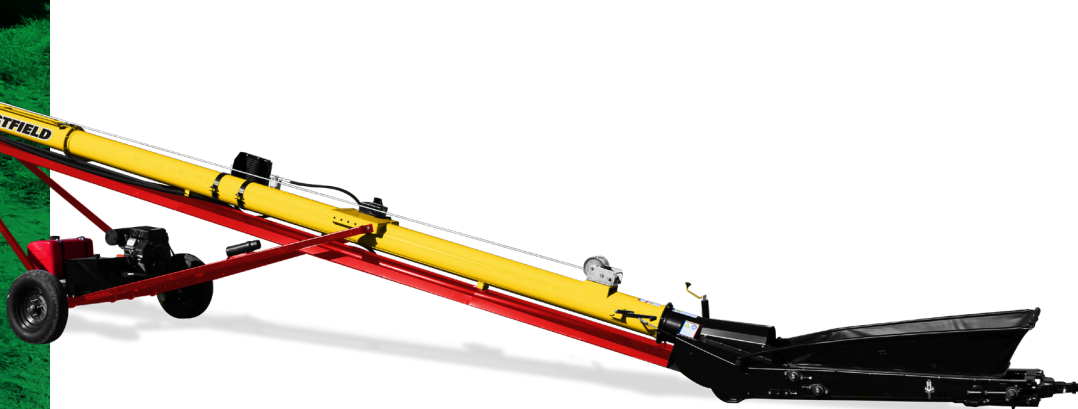


TOP MOUNT (TM) MOTOR OPTION



FX⁴

**10" TUBE
15" BELT
UP TO 7,000 BPH
39', 44', AND 49' LENGTHS**

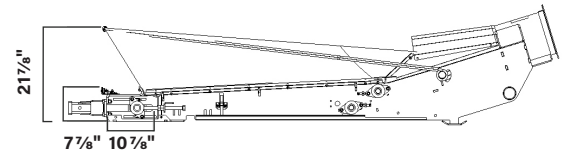
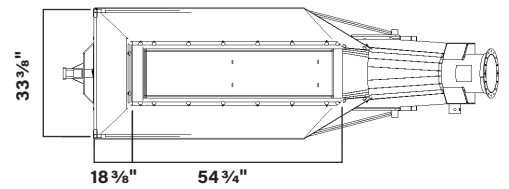


FEATURES

- Grain flows straight down from the spout with the no-nonsense hood
- New pinch roller design allows for easier assembly, better belt traction and improved efficiency
- Available in electric, gas over hydraulic or hydraulic drives so you can move grain even when you don't have electricity
- Hopper lifting handle helps guide the conveyor into place
- Under hopper skid plate stops debris from touching the bottom of the belt, keeping it off the belt and protecting the belt from damage
 - **Ability to pivot skid plate makes it easier for one-person clean-out**
- Additional balance points to optimize hitch weight

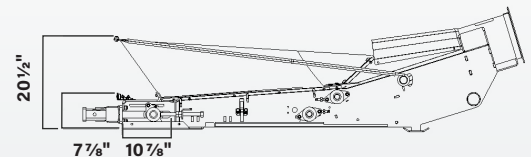
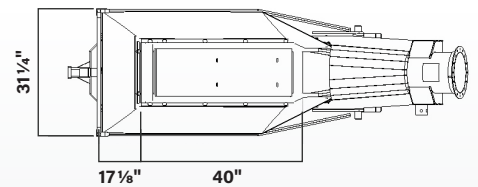
FLTD - FIELD LOADER TOP DRIVE FEATURES

- Parallel hopper cloth stays 33 3/8" wide for the full working length
- Drive roller and pinch roller track together and are easier to access with a removable top plate



SHORT - FIELD LOADER TOP DRIVE SHORT FEATURES

- Designed specifically to fit underneath even the lowest bin unloads
- Drive roller and pinch roller track together and are easier to access with a newly added removable top plate



FX⁴

PRODUCT LINE	FX ⁴ 1539 FLTD	FX ⁴ 1544 FLTD	FX ⁴ 1549 FLTD	FX ⁴ 1539 FLTD SHORT	FX ⁴ 1544 FLTD SHORT	FX ⁴ 1549 FLTD SHORT
CAPACITY	Up to 7000 bph					
TUBE GAUGE	10" x 14 ga					
BELT TYPE	15" wide chevron					
BELT LENGTH	84' 4"	94' 4"	104' 4"	81' 10"	91' 10"	101' 10"
LIFT	Hand or hydraulic winch					
FRAMETYPE	A-frame					
AXLE	2 ½" sq. x .125"					
HUB	4-bolt on 5.0", 3.62" pilot					
TIRES	4-bolt ST205/75D15					
PARKING JACK	1000 lbs rating, top twist, 2 ½" receiver, 15" travel					
HOPPER DIMENSIONS	54 ¾" length x 33 ⅜" width x 21 ⅞" height			40" length x 31 ¼" width x 20 ½" height		
HP REQUIRED (WITH DRY WHEAT)	Electric - 10	Electric - 10 / 12.5	Electric - 12.5 / 15	Electric - 10	Electric - 10 / 12.5	Electric - 12.5 / 15
CONVEYOR WIDTH (HUB FACE TO FACE)	7.5' (90")					
HITCH WEIGHT (WITH MOTOR INSTALLED)	80 lbs	90 lbs	90 lbs	80 lbs	80 lbs	90 lbs
CONVEYOR WEIGHT	1650 lbs	1700 lbs	1750 lbs	1575 lbs	1625 lbs	1675 lbs

SPECIFICATIONS

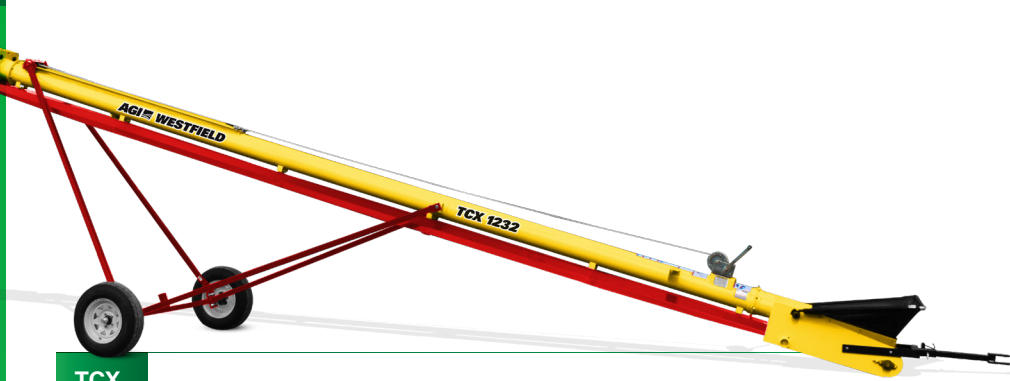
	HEIGHT LOWERED	HEIGHT HALFWAY	HEIGHT RAISED	REACH LOWERED	REACH HALFWAY	REACH RAISED	HEIGHT AT LIFT ARMS HALFWAY	HEIGHT AT WHEELS RAISED	REACH AT LIFT ARMS HALFWAY	REACH AT WHEELS RAISED	HEIGHT AT 23° ANGLE TO BOTTOM OF SPOUT
FX⁴ 1539 FLTD	8' 10.75" (2.718 m)	15' 4.62" (4.705 m)	20' 4.5" (6.185 m)	18' 7.125" (5.645 m)	17' 9.75" (5.41 m)	17' 0.62" (5.15 m)	10' 2.37" (3.131 m)	11' 6.25" (3.512 m)	14' 9" (4.458 m)	16' 8.25" (5.067 m)	13' 2.3125" (4.02 m)
FX⁴ 1544 FLTD	10' 2" (3.099 m)	16' 3.25" (4.959 m)	20' 11.5" (6.388 m)	21' 0.25" (6.407 m)	20' 7" (6.274 m)	20' 1.75" (6.14 m)	10' 4.25" (3.156 m)	11' 6.25" (3.512 m)	17' 5" (5.309 m)	19' 7" (5.969 m)	15' 4.875" (4.70 m)
FX⁴ 1549 FLTD	12' (3.658 m)	17' 7" (5.359 m)	20' 10" (6.35 m)	21' 5.25" (6.534 m)	21' 1.75" (6.445 m)	21' 1" (6.426 m)	10' 4.75" (3.167 m)	11' 6" (3.505 m)	17' 10.75" (5.455 m)	20' 2.25" (6.153 m)	17' 4.125" (5.29 m)
FX⁴ 1539 FLTD SHORT	8' 10.75" (2.718 m)	15' 4.62" (4.705 m)	20' 4.5" (6.185 m)	18' 7.125" (5.645 m)	17' 9.75" (5.41 m)	17' 0.62" (5.15 m)	10' 2.37" (3.131 m)	11' 6.25" (3.512 m)	14' 9" (4.458 m)	16' 8.25" (5.067 m)	13' 2.3125" (4.02 m)
FX⁴ 1544 FLTD SHORT	10' 2" (3.099 m)	16' 3.25" (4.959 m)	20' 11.5" (6.388 m)	21' 0.25" (6.407 m)	20' 7" (6.274 m)	20' 1.75" (6.14 m)	10' 4.25" (3.156 m)	11' 6.25" (3.512 m)	17' 5" (5.309 m)	19' 7" (5.969 m)	15' 4.875" (4.70 m)
FX⁴ 1549 FLTD SHORT	12' (3.658 m)	17' 7" (5.359 m)	20' 10" (6.35 m)	21' 5.25" (6.534 m)	21' 1.75" (6.445 m)	21' 1" (6.426 m)	10' 4.75" (3.167 m)	11' 6" (3.505 m)	17' 10.75" (5.455 m)	20' 2.25" (6.153 m)	17' 4.125" (5.29 m)

Heights measured from bottom of conveyor spout to ground.



TCX

**8" TUBE
12" BELT
UP TO 3,800 BPH
22', 27' AND 32' LENGTHS**



TCX

PRODUCT LINE	TCX 1222 TD	TCX 1227 TD	TCX 1232 TD
CAPACITY	Up to 3800 bph		
TUBE GAUGE	8" OD x 14 ga		
BELT TYPE	12" wide chevron		
BELT LENGTH	46' 5"	56' 2"	66' 3"
LIFT	Hand winch		
FRAME TYPE	A-frame		
AXLE	2" sq. x .188"		
HUB	5-bolt on 4.5", 3.31" pilot		
TIRES	205/75-14		
PTO SHAFT	N/A		
PARKING JACK	1000 lbs load rating, top twist, 2 1/2" receiver, 15" travel		
HOPPER DIMENSIONS	33 3/4" length x 19 3/8" width on narrow end, 34 1/2" width on wide end x 30 1/2" height		
HP REQUIRED (WITH DRY WHEAT)	Electric - 5		
CONVEYOR WIDTH (HUB FACE TO FACE)	84.375"		
CONVEYOR WEIGHT	1000 lbs	1030 lbs	1150 lbs

FEATURES

- 2-Ply chevron belt with poly slider backing
- 205-75-14 tires
- Collapsible intake hopper
- Manual lift winch
- Standard with weather guards
- Poly return rollers
- Powder coat paint

SPECIFICATIONS

	HEIGHT LOWERED	HEIGHT HALFWAY	HEIGHT RAISED	REACH LOWERED	REACH HALFWAY	REACH RAISED	HEIGHT AT LIFT ARMS HALFWAY	HEIGHT AT WHEELS RAISED	REACH AT LIFT ARMS HALFWAY	REACH AT WHEELS RAISED
TCX 1222 TD	8' 2.25" (2.495 m)	9' 6.75" (2.915 m)	10' 8.75" (3.27 m)	7' 7.75" (2.33 m)	7' 4" (2.235 m)	7' 0.25" (2.14 m)	7' 2" (2.184 m)	7' 5" (2.26 m)	7' 1.75" (2.178 m)	7' 0.25" (2.14 m)
TCX 1227 TD	9' 1" (2.769 m)	13' 1" (3.989 m)	15' 11.25" (4.858 m)	9' 2.75" (2.813 m)	8' 6.25" (2.597 m)	7' 8.75" (2.356 m)	9' 1" (2.769 m)	8' 11" (2.718 m)	9' 1.75" (2.788 m)	11' 4" (3.454 m)
TCX 1232 TD	10' 3.5" (3.137 m)	13' 9.75" (4.21 m)	16' 10.25" (5.137 m)	9' 8.5" (2.959 m)	9' 9.25" (2.978 m)	9' 9.75" (2.99 m)	10' 4" (3.15 m)	10' 7" (3.226 m)	9' 4.5" (2.858 m)	9' 10" (3 m)

Heights measured from bottom of conveyor spout to ground.

A-FRAMES AND LONG CONVEYORS

1500 SERIES

10" TUBE // 15" BELT
UP TO 6,000 BPH
35' - 100' LENGTHS

2000 SERIES

14" TUBE // 20" BELT
UP TO 9,000 BPH
45' - 120' LENGTHS

2400 SERIES

14" TUBE // 23.5" BELT
UP TO 14,000 BPH
65' - 120' LENGTHS

FEATURES

- Electric, hydraulic, PTO or gas drive options
- Gentle handling
- Low maintenance and long-lasting belt
- High capacity
- Low horsepower required
- A-frame undercarriage on 35'-55' lengths
- Hydraulic scissor lift on 65'-120' lengths
- Cable trussing on 55'-100' lengths
- Steel tube trussing on 105'-120' lengths
- Extendable axles on 85'-120' lengths
- Collapsible canvas hopper
- Optional self-propelled drive



1500 SERIES

PRODUCT LINE	1535 TD A-FRAME	1540 TD A-FRAME	1545 TD A-FRAME	1555 SD A-FRAME	1565 SD HYD	1575 SD HYD	1585 SD HYD	1590 SD HYD	15100 SD HYD
CAPACITY	Up to 6000 bph								
TUBE GAUGE	10" OD x 14 ga				10" OD x 12 ga				
BELT TYPE	15" wide chevron								
BELT LENGTH	70' 2"	80' 2"	90' 2"	115' 6"	135' 3"	155'	175'	185'	205'
TUBE TRUSSING	N/A				3/8" steel aircraft cable				
LIFT	Hand winch				One 4" x 30 hydraulic cylinder		One 4" x 36 hydraulic cylinder		One 4" x 48 hydraulic cylinder
FRAME TYPE	A-frame				Hydraulic scissor lift				
AXLE	2 1/2" sq. x .125"			2 1/2" sq. x .188"	3" sq. x .188"		3" sq. x .375"		
HUB	4-bolt on 5.0", 3.62" pilot				6-bolt on 6.0", 4.62" pilot				
TIRES	4-bolt ST205/75D15				6-bolt ST205/ 75R15 6PL				
PTO SHAFT	N/A				Side PTO 35E 1 1/2" x 75"; 540 rpm				
PARKING JACK	N/A				7000 lbs load rating, top twist, 2 1/2" receiver, 25" travel				
HOPPER DIMENSIONS	37 7/8" length x 27 5/8" width at narrow end, 47 3/4" width at wide end x 29 15/16" height								
HP REQUIRED (WITH DRY WHEAT)	Electric - 7.5	Electric - 7.5	Electric - 10.0	PTO - 30 Electric - 10 Gas - 27	PTO - 30 Electric - 15 Gas - 27	PTO - 40 Electric - 20 Gas - 27	PTO - 40 Electric - 20 Gas - 35	PTO - 50 Electric - 25 Gas - 35	PTO - 50 Electric - 25 Gas - 35
CONVEYOR WIDTH (HUB FACE TO FACE)	83.125"			101.5"	126.375"	126.375"	132.5"	132.5"	132.5"
AXLE EXTENSION LENGTH	N/A						38"	38"	38"
CONVEYOR WEIGHT	1580 lbs	1680 lbs	1780 lbs	2360 lbs	3000 lbs	3260 lbs	3740 lbs	3850 lbs	4450 lbs

SPECIFICATIONS

	HEIGHT LOWERED	HEIGHT HALFWAY	HEIGHT RAISED	REACH LOWERED	REACH HALFWAY	REACH RAISED	HEIGHT AT LIFT ARMS HALFWAY	HEIGHT AT WHEELS RAISED	REACH AT LIFT ARMS HALFWAY	REACH AT WHEELS RAISED
1535 TD A-FRAME	8' 3" (2.515 m)	15' 4.25" (4.68 m)	17' 5.25" (5.315 m)	13' 6.5" (4.128 m)	15' 4.25" (4.68 m)	13' 0.25" (3.969 m)	10' 1" (3.073 m)	11' 2.75" (3.423 m)	10' 9.75" (3.296 m)	13' 0.75" (3.981 m)
1540 TD A-FRAME	9' 9.25" (2.978 m)	14' 5" (4.394 m)	17' 9.5" (5.423 m)	14' 8.5" (4.483 m)	14' 3" (4.343 m)	15.2' (4.623 m)	10' 8.5" (3.264 m)	11' 6" (3.505 m)	12' 3.75" (3.753 m)	14' 3" (4.343 m)
1545 TD A-FRAME	11' 5.25" (3.493 m)	16' (4.877 m)	19' 1" (5.817 m)	17' 3" (5.258 m)	16' 7.5" (5.067 m)	15' 11" (4.851 m)	11' 3.5" (3.442 m)	12' (3.658 m)	15' 1.5" (4.61 m)	16' (4.877 m)
1555 TD A-FRAME	11' 0.25" (3.359 m)	20' 11" (6.375 m)	28' 0.5" (8.547 m)	24' 2" (7.366 m)	23' 3.5" (7.099 m)	22' 2.5" (6.769 m)	14' 5.75" (4.413 m)	16' 2" (4.928 m)	18' 4" (5.588 m)	22' 1.25" (6.737 m)
1565 SD HYD	9' 5.25" (2.876 m)	22' 9" (6.934 m)	33' 11" (10.338 m)	26' 8" (8.128 m)	25' 3.25" (7.703 m)	22' 10.75" (6.972 m)	14' 11" (4.547 m)	21' 7" (6.58 m)	25' 1.75" (7.664 m)	22' 10.75" (6.979 m)
1575 SD HYD	10' 10.5" (3.315 m)	25' (7.62 m)	39' (11.887 m)	35' 9.5" (10.909 m)	27' (8.23 m)	30' 8" (9.347 m)	14' 4.25" (4.375 m)	22' 3" (6.782 m)	33' 4" (10.16 m)	28' 1" (8.56 m)
1585 SD HYD	12' 4" (3.759 m)	28' 11.75" (8.833 m)	43' 6" (13.259 m)	41' 8" (12.7 m)	39' 9.75" (12.135 m)	35' (10.668 m)	15' 3.25" (4.655 m)	23' 4.5" (7.125 m)	39' 9.75" (12.135 m)	35' (10.668 m)
1590 SD HYD	14.9' (4.496 m)	30' 8.5" (9.36 m)	44.2' (13.462 m)	46.7' (14.199 m)	44' 5.75" (13.557 m)	39.5 (11.989 m)	15' 1.75" (4.616 m)	22' 6" (6.909 m)	44' 5.75" (13.557 m)	40' (12.192 m)
15100 SD HYD	11' 4" (3.454 m)	32' 11.5" (10.046 m)	50' 3" (15.316 m)	48' 4" (14.732 m)	45' 7.5" (13.735 m)	39' 3" (11.963 m)	17' 11.5" (5.474 m)	28' 4" (8.636 m)	45' 7.5" (13.907 m)	40' (12.192 m)

Heights measured from bottom of conveyor spout to ground.

2000 SERIES

PRODUCT LINE	2045 A-FRAME	2055 A-FRAME	2065 HYD	2075 HYD	2085 HYD	2095 HYD	20105 HYD	20110 HYD	20120 HYD
CAPACITY	Up to 9000 bph								
TUBE GAUGE	14"OD x 12 ga								
BELT TYPE	20" wide chevron ultimate								
BELT LENGTH	97' 10"	117' 10"	137' 10"	157' 10"	177' 10"	197' 10"	217' 10"	227' 10"	247' 10"
TUBE TRUSSING	N/A	3/8" aircraft steel cable					3.5" x .120W round tubing		
LIFT	Hand winch		Two 4" x 30" hydraulic cylinders		Two 4" x 36" hydraulic cylinders		Three 4 1/2" x 40" hydraulic cylinders		
FRAME TYPE	A-frame			Hydraulic scissor lift					
AXLE	3 1/2" sq. x .188"								
HUB	6-bolt on 6", 4.62" pilot						6-bolt on 6", 4.62" pilot		
TIRES	ST205 75R 15 6PL		ST235 / 80R16, load range "E", max speed 120 km/h, max psi 80				ASM-6-bolt 12.5LX16 LRG		
PTO SHAFT	Side drive 35E 1 1/2"x 75", 540 PTO Front drive 35E CV 540 PTO								
PARKING JACK	15000 lbs load rating, side twist, 2 1/2" receiver, 24" travel								
HOPPER DIMENSIONS	37 7/8" length x 37" width at narrow end, 48 15/16" width at wide end x 23 1/2" height								
HP REQUIRED (WITH DRY WHEAT)	Electric - 15	PTO - 50 Electric - 20	PTO - 60 Electric - 25	PTO - 60 Electric - 30	PTO - 70 Electric - 30	PTO - 80 Electric - 40	PTO - 80 Electric - 40	PTO - 100 Electric - 50	PTO - 100 Electric - 50
CONVEYOR WIDTH (HUB FACE TO FACE)	86.375"	116.25"	132.5"				150"		
AXLE EXTENSION LENGTH	N/A			38"			32.5"		
CONVEYOR WEIGHT	3100 lbs	3650 lbs	4830 lbs	5130 lbs	5870 lbs	6130 lbs	7990 lbs	9160 lbs	9430 lbs

SPECIFICATIONS

	HEIGHT LOWERED	HEIGHT HALFWAY	HEIGHT RAISED	REACH LOWERED	REACH HALFWAY	REACH RAISED	HEIGHT AT LIFT ARMS HALFWAY	HEIGHT AT WHEELS RAISED	REACH AT LIFT ARMS HALFWAY	REACH AT WHEELS RAISED
2045 A-FRAME	11' 7.5" (3.543 m)	17' 3.75" (5.277 m)	22' 1.5" (6.743 m)	22' 7.75" (6.896 m)	22' 2.25" (6.763 m)	21' 7.75" (6.598 m)	10' 9" (3.277 m)	11' 8.25" (3.562 m)	19' 9.75" (6.039 m)	21' 7.75" (6.598 m)
2055 A-FRAME	10' 11" (3.327 m)	19' 11.5" (6.083 m)	27' 2.25" (8.287 m)	24' 6.75" (7.487 m)	24' 8.5" (7.531 m)	25' 1" (7.645 m)	14' 7" (4.445 m)	16' 3" (4.953 m)	18' 7" (5.664 m)	22' 7" (6.883 m)
2065 HYD	8' 2.25" (2.496 m)	19' 5" (5.766 m)	31' 5.75" (9.595 m)	25' 9.75" (7.868 m)	25' (7.62 m)	22.3' (6.782 m)	13' 7.25" (4.147 m)	20' 10" (6.35 m)	25' (7.62 m)	23' 0.75" (7.029 m)
2075 HYD	10' 5" (3.175 m)	23' 4" (7.112 m)	37' 1" (11.303 m)	35' 9" (10.897 m)	34' 5" (10.49 m)	31' 6" (9.601 m)	13' 4" (4.064 m)	20' 7" (6.274 m)	34' 5" (10.49 m)	34' 5" (10.49 m)
2085 HYD	10' 1.5" (3.086 m)	21' 9.5" (6.642 m)	42' 9" (13.03 m)	38' 5" (11.709 m)	37' 2" (11.328 m)	32' 1" (9.779 m)	13' 2" (4.013 m)	25' 10" (7.874 m)	37' 2" (11.328 m)	32' 1" (9.779 m)
2095 HYD	11' 6.75" (3.524 m)	24' 7" (7.493 m)	47' 11" (14.605 m)	48' 4" (14.732 m)	46' 9.5" (14.262 m)	40' 7" (12.37 m)	13' 9.75" (4.21 m)	26' 5.75" (8.071 m)	46' 9.5" (14.262 m)	40' 7" (12.37 m)
20105 HYD	10' 3.75" (3.143 m)	35' 1" (10.693 m)	54' 7.25" (16.65 m)	46' 0.25" (14.027 m)	43' 7.5" (13.297 m)	39' 8.5" (12.103 m)	21' (6.401 m)	33' 4.75" (10.179 m)	42' 10" (13.056 m)	37' 3.75" (11.373 m)
20110 HYD	10' 10.75" (3.321 m)	36' 7.25" (11.157 m)	57' 5.5" (17.513 m)	52' (15.85 m)	49' 6.5" (15.1 m)	44' 11.75" (13.71 m)	20' 11.75" (6.395 m)	33' 4.75" (10.179 m)	48' 8.5" (14.846 m)	42' 7" (12.979 m)
20120 HYD	12' 1.25" (3.689 m)	40' 1" (12.217 m)	62' 9.5" (19.139 m)	61' 11.25" (18.878 m)	58' 11" (17.958 m)	53' 5.5" (16.294 m)	20' 11.75" (6.394 m)	33' 4.75" (10.179 m)	58' 1" (17.704 m)	51' 0.75" (15.564 m)

Heights measured from bottom of conveyor spout to ground.

2400 SERIES

PRODUCT LINE	2465 HYD	2475 HYD	2485 HYD	2495 HYD	24105 HYD	24110 HYD	24120 HYD
CAPACITY	Up to 14000 bph						
TUBE GAUGE	14"OD x 12 ga						
BELT TYPE	23.5" wide chevron ultimate						
BELT LENGTH	140' 6"	160' 6"	180' 6"	200' 6"	220' 6"	230' 6"	250' 6"
TUBE TRUSSING	½" aircraft steel cable				3.5" x .120W round tubing		
LIFT	Two 4" x 30" hydraulic cylinders		Two 4" x 30" hydraulic cylinders		Three 4 ½" x 40" hydraulic cylinders		
FRAME TYPE	Hydraulic scissor lift						
AXLE	3 ½" sq. x .188"						
HUB	6-bolt on 6", 4.62" pilot				6-bolt on 6", 4.62" pilot		
TIRES	ST235 / 80R16, load range "E"				6-bolt 12.5LX16 LRG		
PTO SHAFT	Side PTO option 35E 1 ½" x 75" PTO 1 ¾" 6 spline output; Front PTO option 35E CAT 4 50 DEG. E CV drive shaft 1 ¾" 6 spline output						
PARKING JACK	15000 lbs load rating, side twist, 2 ½" receiver, 24" travel						
HOPPER DIMENSIONS	51 ¾" length x 37 ¾" width at narrow end, 50 ¼" width at wide end x 38 ¾" height						
HP REQUIRED (WITH DRY WHEAT)	PTO - 60 Electric - 25	PTO - 70 Electric - 30	PTO - 80 Electric - 30	PTO - 80 Electric - 40	PTO - 90 Electric - 40	PTO - 100 Electric - 50	PTO - 120 Electric - 50
CONVEYOR WIDTH (HUB FACE TO FACE)	132.5"				150"		
AXLE EXTENSION LENGTH	38"				32.5"		
CONVEYOR WEIGHT	5080 lbs	5400 lbs	6150 lbs	6630 lbs	8310 lbs	9500 lbs	9770 lbs

SPECIFICATIONS

	HEIGHT LOWERED	HEIGHT HALFWAY	HEIGHT RAISED	REACH LOWERED	REACH HALFWAY	REACH RAISED	HEIGHT AT LIFT ARMS HALFWAY	HEIGHT AT WHEELS RAISED	REACH AT LIFT ARMS HALFWAY	REACH AT WHEELS RAISED
2465	8' 4.25" (2.546 m)	19' 7.25" (5.975 m)	31' 8" (9.652 m)	26' 6.75" (8.096 m)	25' 8.75" (7.842 m)	24' 0.5" (7.328 m)	13' 1.5" (4.102 m)	21' 5.75" (6.547 m)	25' 8.75" (7.842 m)	22' 2.5" (6.769 m)
2475	14' 3" (4.343 m)	22' 9.75" (6.953 m)	36' 3" (11.049 m)	35' 9.5" (10.9093 m)	34' 1.5" (10.401 m)	31' 7.25" (9.632 m)	12' 7.5" (3.848 m)	21' 5.5" (6.541 m)	34' 1.5" (10.401 m)	29' 9.25" (9.074 m)
2485	13' 9" (4.176 m)	22' (6.706 m)	42' 4" (12.893 m)	38' 8" (11.765 m)	38' 0.5" (11.595 m)	32' 7" (9.936 m)	13' 4" (4.064 m)	25' 6" (7.772 m)	38' 0.5" (11.595 m)	33' 4" (10.16 m)
2495	11' 3" (3.429 m)	24' 3" (7.391 m)	47' 7" (14.503 m)	49' 1" (14.961 m)	47' 9" (14.554 m)	41' 11.75" (12.795 m)	13' 0.5" (3.975 m)	25' 6" (7.772 m)	47' 9" (14.554 m)	41' 11.75" (12.795 m)
24105	10' 3.5" (3.137 m)	34' 9.75" (10.611 m)	54' 8.75" (16.681 m)	47' 8.5" (14.542 m)	45' 7.75" (13.907 m)	41' 9.5" (12.891 m)	20' 9.5" (6.337 m)	33' 1.5" (10.097 m)	44' 8.75" (13.633 m)	39' 1.75" (11.932 m)
24110	10' 10.5" (3.315 m)	36' 6.5" (11.138 m)	57' 4" (17.475 m)	52' 7.75" (16.046 m)	50' 4" (15.342 m)	46' (14.021 m)	20' 9.5" (6.337 m)	33' 1.75" (10.103 m)	49' 5" (15.062 m)	43' 4.75" (13.227 m)
24120	12' 1" (3.683 m)	40' (12.192 m)	62' 7" (19.075 m)	62' 7" (19.075 m)	59' 8.5" (18.199 m)	54' 6" (16.612 m)	20' 9.5" (6.337 m)	33' 1.5" (10.1 m)	58' 9" (17.907 m)	51' 10" (15.799 m)

Heights measured from bottom of conveyor spout to ground.

1500 SWINGAWAY

PRODUCT LINE	1565 SA	1575 SA	1585 SA	1590 SA	15100 SA
CAPACITY	Up to 6000 bph				
TUBE GAUGE	10" OD x 12 ga				
BELT TYPE	15" wide chevron				
BELT LENGTH	135' 3"	155'	175'	185'	205'
TUBE TRUSSING	3/8" steel aircraft cable				
LIFT	One 4" x 30 cylinder		One 4" x 36 cylinder		One 4" x 48 cylinder
FRAME TYPE	Hydraulic scissor lift				
AXLE	3" sq. x .188"		3" sq. x .375"		
HUB	6-bolt on 6.0" B.C.D., 4.62" pilot				
TIRES	6-bolt ST205/ 75R15 6PL				
DRIVE OPTIONS	Side or Front PTO				
PARKING JACK	7000 lbs load rating, top twist, 2 1/2" receiver, 25" travel				
HOPPER DIMENSIONS	N/A, enclosed with swingaway				
HP REQUIRED (WITH DRY WHEAT)	PTO - 30	PTO - 40	PTO - 40	PTO - 50	PTO - 50
CONVEYOR WIDTH (HUB FACE TO FACE)	126.375"	126.375"	132.5"	132.5"	132.5"
AXLE EXTENSION LENGTH	N/A		38"	38"	38"
CONVEYOR WEIGHT	3000 lbs	3260 lbs	3740 lbs	3850 lbs	4450 lbs
SWINGAWAY WEIGHT	1200 lbs				

SPECIFICATIONS

	HEIGHT LOWERED	HEIGHT HALFWAY	HEIGHT RAISED	REACH LOWERED	REACH HALFWAY	REACH RAISED	HEIGHT AT LIFT ARMS HALFWAY	HEIGHT AT WHEELS RAISED	REACH AT LIFT ARMS HALFWAY	REACH AT WHEELS RAISED
1565 SA	9' 5.25" (2.876 m)	22' 9" (6.934 m)	33' 11" (10.338 m)	26' - 8" (8.128 m)	25' 3.25" (7.703 m)	22' 10.75" (6.972 m)	14' 11" (4.547 m)	21' 7" (6.58 m)	25' 1.75" (7.664 m)	22' 10.75" (6.979 m)
1575 SA	10' 10.5" (3.315 m)	25' (7.62 m)	39' 0" (11.887 m)	35' 9.5" (10.909 m)	27' (8.23 m)	30' 8" (9.347 m)	14' 4.25" (4.375 m)	22' 3" (6.782 m)	33' 4" (10.16 m)	28' 1" (8.56 m)
1585 SA	12' 4" (3.759 m)	28' 11.75" (8.833 m)	43' 6" (13.259 m)	41' 8" (12.7 m)	39' 9.75" (12.135 m)	35' 0" (10.668 m)	15' 3.25" (4.655 m)	23' 4.5" (7.125 m)	39' 9.75" (12.135 m)	35' (10.668 m)
1590 SA	14.9' (4.496 m)	30' 8.5" (9.36 m)	44.2' (13.462 m)	46.7' (14.199 m)	44' 5.75" (13.557 m)	39.5' (11.989 m)	15' 1.75" (4.616 m)	22' 6" (6.909 m)	44' 5.75" (13.557 m)	40' (12.192 m)
15100 SA	11' 4" (3.454 m)	32' 11.5" (10.046 m)	50' 3" (15.316 m)	48' 4" (14.732 m)	45' 7.5" (13.735 m)	39' 3" (11.963 m)	17' 11.5" (5.474 m)	28' 4" (8.636 m)	45' 7.5" (13.907 m)	40' (12.192 m)

Heights measured from bottom of conveyor spout to ground.

2000 SWINGAWAY

PRODUCT LINE	2065 SA	2075 SA	2085 SA	2095 SA	20105 SA	20110 SA	20120 SA
CAPACITY	Up to 9000 bph						
TUBE GAUGE	14"OD x 12 ga						
BELT TYPE	20" wide chevron ultimate						
BELT LENGTH	137' 10"	157' 10"	177' 10"	197' 10"	217' 10"	227' 10"	247' 10"
TUBE TRUSSING	3/8" aircraft steel cable				Ridgid 3.5" x .120W round tubing		
LIFT	Two 4" x 30" cylinders		Two 4" x 36" cylinders		Three 4 1/2" x 40" cylinders		
FRAME TYPE	Hydraulic scissor lift						
AXLE	3 1/2" sq. x .188"						
HUB	6-bolt on 6" B.C.D., 4.62" pilot				6-bolt on 6" B.C.D., 4.62" pilot		
TIRES	ST235 / 80R16, load range "E"				6-bolt 12.5L x 16 LRG		
PTO SHAFT	Side PTO option 35E 1 1/2" x 75", PTO 1 3/8" 6 spline output: Front PTO option 35E CAT 4 50 DEG. E CV drive shaft 1 3/8" 6 spline output						
PARKING JACK	15000 lbs load rating, side twist, 2 1/2" receiver, 24" travel						
HOPPER DIMENSIONS	N/A, enclosed with swingaway						
HP REQUIRED (WITH DRY WHEAT)	PTO - 60	PTO - 60	PTO - 70	PTO - 80	PTO - 80	PTO - 100	PTO - 100
CONVEYOR WIDTH (HUB FACE TO FACE)	132.5"				150"		
AXLE EXTENSION LENGTH	38"				32.5"		
CONVEYOR WEIGHT	4830 lbs	5130 lbs	5870 lbs	6130 lbs	7990 lbs	9160 lbs	9430 lbs
SWINGAWAY WEIGHT	1240 lbs						

SPECIFICATIONS

	HEIGHT LOWERED	HEIGHT HALFWAY	HEIGHT RAISED	REACH LOWERED	REACH HALFWAY	REACH RAISED	HEIGHT AT LIFT ARMS HALFWAY	HEIGHT AT WHEELS RAISED	REACH AT LIFT ARMS HALFWAY	REACH AT WHEELS RAISED
2065 SA	8' 2.25" (2.496 m)	19' 5" (5.766 m)	31' 5.75" (9.595 m)	25' 9.75" (7.868 m)	25' (7.62 m)	22.3' (6.782 m)	13' 7.25" (4.147 m)	20' 10" (6.35 m)	25' (7.62 m)	23' 0.75" (7.029 m)
2075 SA	10' 5" (3.175 m)	23' 4" (7.112 m)	37' 1" (11.303 m)	35' 9" (10.897 m)	34' 5" (10.49 m)	31' 6" (9.601 m)	13' 4" (4.064 m)	20' 7" (6.274 m)	34' 5" (10.49 m)	34' 5" (10.49 m)
2085 SA	10' 1.5" (3.086 m)	21' 9.5" (6.642 m)	42' 9" (13.03 m)	38' 5" (11.709 m)	37' 2" (11.328 m)	32' 1" (9.779 m)	13' 2" (4.013 m)	25' 10" (7.874 m)	37' 2" (11.328 m)	32' 1" (9.779 m)
2095 SA	11' 6.75" (3.524 m)	24' 7" (7.493 m)	47' 11" (14.605 m)	48' 4" (14.732 m)	46' 9.5" (14.262 m)	40' 7" (12.37 m)	13' 9.75" (4.21 m)	26' 5.75" (8.071 m)	46' 9.5" (14.262 m)	40' 7" (12.37 m)
20105 SA	10' 3.75" (3.143 m)	35' 1" (10.693 m)	54' 7.25" (16.65 m)	46' 0.25" (14.027 m)	43' 7.5" (13.297 m)	39' 8.5" (12.103 m)	21' (6.401 m)	33' 4.75" (10.179 m)	42' 10" (13.056 m)	37' 3.75" (11.373 m)
20110 SA	10' 10.75" (3.321 m)	36' 7.25" (11.157 m)	57' 5.5" (17.513 m)	52' (15.85 m)	49' 6.5" (15.1 m)	44' 11.75" (13.71 m)	20' 11.75" (6.395 m)	33' 4.75" (10.179 m)	48' 8.5" (14.846 m)	42' 7" (12.979 m)
20120 SA	12' 1.25" (3.689 m)	40' 1" (12.217 m)	62' 9.5" (19.139 m)	61' 11.25" (18.878 m)	58' 11" (17.958 m)	53' 5.5" (16.294 m)	20' 11.75" (6.394 m)	33' 4.75" (10.179 m)	58' 1" (17.704 m)	51' 0.75" (15.564 m)

Heights measured from bottom of conveyor spout to ground.

2400 SWINGAWAY

PRODUCT LINE	2465 SA	2475 SA	2485 SA	2495 SA	24105 SA	24110 SA	24120 SA
CAPACITY	Up to 14000 bph						
TUBE GAUGE	14"OD x 12 ga						
BELT TYPE	23.5" chevron ultimate						
BELT LENGTH	140' 6"	160' 6"	180' 6"	200' 6"	220' 6"	230' 6"	250' 6"
TUBE TRUSSING	½" aircraft steel cable				Rigid 3.5" x .120W round tubing		
LIFT	Two 4" x 30" cylinders		Two 4" x 36" cylinders		Three 4 ½" x 40" cylinders		
FRAME TYPE	Hydraulic scissor lift						
AXLE	3 ½" sq. x .188"						
HUB	6-bolt on 6", 4.62" pilot				6-bolt on 6", 4.62" pilot		
TIRES	ST235 / 80R16, load range "E"				ASM-6BLT 12.5LX16 LRG		
PTO SHAFT	Side PTO option 35E 1 ½" x 75", PTO 1 ¾" 6 spline output: Front PTO option 35E CAT 4 50 DEG. E CV drive shaft 1 ¾" 6 spline output						
PARKING JACK	15000 lbs load rating, side twist, 2 ½" receiver, 24" travel						
HOPPER DIMENSIONS	N/A, enclosed with swingaway						
HP REQUIRED (WITH DRY WHEAT)	PTO - 60	PTO - 70	PTO - 80	PTO - 80	PTO - 90	PTO - 100	PTO - 120
CONVEYOR WIDTH (HUB FACE TO FACE)	132.5"				150"		
AXLE EXTENSION LENGTH	38"				32.5"		
CONVEYOR WEIGHT	5080 lbs	5400 lbs	6150 lbs	6630 lbs	8310 lbs	9500 lbs	9770 lbs
SWINGAWAY WEIGHT	1300 lbs						

SPECIFICATIONS

	HEIGHT LOWERED	HEIGHT HALFWAY	HEIGHT RAISED	REACH LOWERED	REACH HALFWAY	REACH RAISED	HEIGHT AT LIFT ARMS HALFWAY	HEIGHT AT WHEELS RAISED	REACH AT LIFT ARMS HALFWAY	REACH AT WHEELS RAISED
2465 SA	8' 4.25" (2.546 m)	19' 7.25" (5.975 m)	31' 8" (9.652 m)	26' 6.75" (8.096 m)	25' 8.75" (7.842 m)	24' 0.5" (7.328 m)	13' 1.5" (4.102 m)	21' 5.75" (6.547 m)	25' 8.75" (7.842 m)	22' 2.5" (6.769 m)
2475 SA	14' 3" (4.343 m)	22' 9.75" (6.953 m)	36' 3" (11.049 m)	35' 9.5" (10.9093 m)	34' 1.5" (10.401 m)	31' 7.25" (9.632 m)	12' 7.5" (3.848 m)	21' 5.5" (6.541 m)	34' 1.5" (10.401 m)	29' 9.25" (9.074 m)
2485 SA	13' 9" (4.176 m)	22' (6.706 m)	42' 4" (12.893 m)	38' 8" (11.765 m)	38' 0.5" (11.595 m)	32' 7" (9.936 m)	13' 4" (4.064 m)	25' 6" (7.772 m)	38' 0.5" (11.595 m)	33' 4" (10.16 m)
2495 SA	11' 3" (3.429 m)	24' 3" (7.391 m)	47' 7" (14.503 m)	49' 1" (14.961 m)	47' 9" (14.554 m)	41' 11.75" (12.795 m)	13' 0.5" (3.975 m)	25' 6" (7.772 m)	47' 9" (14.554 m)	41' 11.75" (12.795 m)
24105 SA	10' 3.5" (3.137 m)	34' 9.75" (10.611 m)	54' 8.75" (16.681 m)	47' 8.5" (14.542 m)	45' 7.75" (13.907 m)	41' 9.5" (12.891 m)	20' 9.5" (6.337 m)	33' 1.5" (10.097 m)	44' 8.75" (13.633 m)	39' 1.75" (11.932 m)
24110 SA	10' 10.5" (3.315 m)	36' 6.5" (11.138 m)	57' 4" (17.475 m)	52' 7.75" (16.046 m)	50' 4" (15.342 m)	46' (14.021 m)	20' 9.5" (6.337 m)	33' 1.75" (10.103 m)	49' 5" (15.062 m)	43' 4.75" (13.227 m)
24120 SA	12' 1" (3.683 m)	40' (12.192 m)	62' 7" (19.075 m)	62' 7" (19.075 m)	59' 8.5" (18.199 m)	54' 6" (16.612 m)	20' 9.5" (6.337 m)	33' 1.5" (10.1 m)	58' 9" (17.907 m)	51' 10" (15.799 m)

Heights measured from bottom of conveyor spout to ground.

WCX² 1515

LOW PROFILE TRANSFER



FEATURES

- 7 ½" hopper clearance;
9" clearance at transition
- 28" discharge height
- 30" x 75" collapsible hopper
- Hydraulic, electric, or gas drive options

WCX² 1515

PRODUCT LINE	WCX ² 1515 LOW PROFILE TRANSFER
CAPACITY	Up to 3800 bph
TUBE GAUGE	10" OD x 12 ga
BELT TYPE	15" wide chevron
BELT LENGTH	32' 8"
AXLE	2" sq. x .188"
HUB	4-bolt on 4", 2.50" pilot
TIRES	570 x 8
HOPPER DIMENSIONS	59" length x 20" width on narrow end, 33" width on wide end x 22 1/4" height
HP REQUIRED (WITH DRY WHEAT)	Electric - 5 Gas - 9
CONVEYOR WIDTH (HUB FACE TO FACE)	45.6"
CONVEYOR WEIGHT	642 lbs

SPECIFICATIONS

	HEIGHT LOWERED	HEIGHT HALFWAY	HEIGHT RAISED	REACH LOWERED	REACH HALFWAY	REACH RAISED	HEIGHT AT LIFT ARMS HALFWAY	HEIGHT AT WHEELS RAISED	REACH AT LIFT ARMS HALFWAY	REACH AT WHEELS RAISED
WCX ² 1515 LOW PROFILE TRANSFER	2' 7.75" (.806 m)	N/A	N/A	6' 6.5" (2 m)	N/A	N/A	N/A	N/A	N/A	N/A

The transfer has only one position.

Heights measured from bottom of conveyor spout to ground.

PITSTOP



1800

UP TO 11,000 BPH
25' LENGTH

2400

UP TO 18,000 BPH
27' LENGTH

FEATURES

- Streamlined intake and redesigned discharge hood for faster grain flow and better grain containment
- Quick, convenient unloading
- Gentle handling and fast setup
- Low, 7 1/2" clearance
- 8' x 12' easy access dump platform
- Large, 32" x 114" hopper
- Hydraulic lift on transport wheels
- 28" discharge height
- Hydraulic, electric, or gas drive options
- Optional self-propelled kit available

PITSTOP

PRODUCT LINE	PITSTOP FX 1800	PITSTOP FX 2400
CAPACITY	Up to 11000 bph	Up to 18000 bph
TUBE GAUGE	14" OD x 12 ga	
BELT TYPE	18" wide chevron	24" wide chevron
BELT LENGTH	48' 3"	52' 1"
LIFT	Two 2" bore x 8" travel cylinders	
AXLE	3" sq. x .188"	
HUB	6-bolt on 6.0"- 4.62" pilot	
TIRES	6-bolt ST205/75R15 LRC 6PL	
PARKING JACK	7000 lbs, top spin, 2 1/2" receiver, 25" travel	
HOPPER DIMENSIONS	143 3/4" length x 52 5/8" width	143 3/4" length x 58 3/4" width
HP REQUIRED (WITH DRY WHEAT)	Electric - 10 Gas - 32	Electric - 15 Gas - 32
CONVEYOR WIDTH (HUB FACE TO FACE)	94.75"	
CONVEYOR WEIGHT	2970 lbs	3260 lbs

SPECIFICATIONS

	HEIGHT LOWERED	HEIGHT HALFWAY	HEIGHT RAISED	REACH LOWERED	REACH HALFWAY	REACH RAISED	HEIGHT AT LIFT ARMS HALFWAY	HEIGHT AT WHEELS RAISED	REACH AT LIFT ARMS HALFWAY	REACH AT WHEELS RAISED
PITSTOP FX 1800	2' 3.75" (.705 m)	N/A	3' 7" (1.092 m)	5' 11.5" (1.816 m)	N/A	5' 9.25" (1.759 m)	N/A	N/A	N/A	N/A
PITSTOP FX 2400	3' 0.750" (.933 m)	N/A	4' 4" (1.321 m)	7' 1.75" (2.178 m)	N/A	6' 11.750" (2.127 m)	N/A	N/A	N/A	N/A

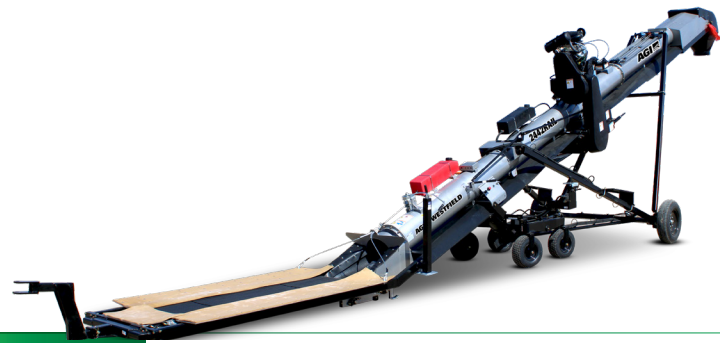
Heights measured from bottom of conveyor spout to ground.

RAILCAR UNLOADER

AGI WESTFIELD 2442 UP TO 14,000 BPH

FEATURES

- 4" hopper clearance
- Self-propelled with hydraulic lift
- Spring-loaded walking axles
- Four 6" wide high-performance wheels controlled by hydraulic joystick steering
- Comes standard with gas engine drive mounted on top side of conveyor tube
 - Can be custom ordered with electric drive
- Can be custom ordered in stainless steel (as shown in picture)



RAILCAR

PRODUCT LINE	2442FL RAILCAR UNLOADER FMD
CAPACITY	Up to 14000 bph
TUBE GAUGE	14"OD x 12 ga
BELT TYPE	23.5" wide chevron ultimate
BELT LENGTH	100' 4"
LIFT	Hydraulic
FRAME TYPE	A-frame
AXLE	3" sq. x .188"
HUB	6-bolt on 6", 4.62" pilot
TIRES	ST205 75R15 6 PL
PARKING JACK	7000 lbs load rating, top twist, 2 1/2" receiver, 25" travel
HOPPER DIMENSIONS	Flaps 87 1/16" apart when lowered, 42 3/16" apart when in "up" position
HP REQUIRED (WITH DRY WHEAT)	Vanguard 37 HP EFI
CONVEYOR WIDTH (HUB FACE TO FACE)	92.25"
CONVEYOR WEIGHT	5000 lbs

SPECIFICATIONS

	HEIGHT LOWERED	HEIGHT HALFWAY	HEIGHT RAISED	REACH LOWERED	REACH HALFWAY	REACH RAISED	HEIGHT AT LIFT ARMS HALFWAY	HEIGHT AT WHEELS RAISED	REACH AT LIFT ARMS HALFWAY	REACH AT WHEELS RAISED
	A	B	C	D	E	F	G	H	I	J
2442 FL RAILCAR UNLOADER FMD	9' 10.75" (3.016 m)	14' 1.25" (4.3 m)	17' 6.5" (5.35 m)	16' 3.5" (5 m)	14' 9.5" (4.5 m)	14' 4.5" (4.38 m)	10' 6.75" (3.22 m)	11' 8" (3.56 m)	12' 2" (3.71 m)	14' (4.27 m)

Heights measured from bottom of conveyor spout to ground.





AGI is a global leader in supplying farm and commercial customers with the manufacturing, planning, and engineering of full equipment solutions for grain, seed, fertilizer, feed, and food. AGI's expertise enables the storage, blending, mixing, conveying, conditioning, processing, and protection of agricultural products and inputs worldwide.

Your safety is our highest priority.

Please read and understand the operator's manual and safety decals before using. Use and maintain products properly, and do not modify. Keep guards in place when operating and follow all product manuals and safety decals. For all AGI products, if guards, safety decals, or manuals are damaged or missing, contact your AGI sales or dealer representative for replacements. Images and information contained in this brochure are presented for general information.

Westfield, AGI and the furrows symbol are trademarks belonging to Ag Growth International Inc.

198 Commerce Drive, Winnipeg, Manitoba, Canada R3P 0Z6

P 855.432.1990

     @aggrowthintl

AGGROWTH.COM