



2024

AGI LATAM



AGI OVERVIEW

- AGI supplies complete systems, equipment, and technology to the agri-food industry
- Large diversified global business with leading brands
- 34 global manufacturing facilities
- 5,000 employees
- Stable foundation through market leading catalogue in North American Farm business
- Commercial market growth opportunities in North America and International

COMMERCIAL



FEED



FERTILIZER



RICE





COMMERCIAL

AGI provides turnkey service offerings to multinational customers through a variety of solutions. Specifically, our fertilizer systems designs, manufactures, installs, and maintains fertilizer handling equipment that can be scaled to fit your unique needs and requirements. Our products, equipment, technology, and services help facilitate the storage, blending, mixing, conveying, conditioning and processing. We're partnering with our customers, delivering solutions around the globe.

With thousands of installations across the globe, AGI supplying the world's food infrastructure.

STORING THE WORLD'S MOST VALUABLE RESOURCE

AGI provides industry-leading storage solutions.



STORAGE

Flat Bottom Bins

- Up to 41 m (135') in diameter
- Up to 29,261 mt in capacity
- Z350, Z450 & Z600 galvanized coating

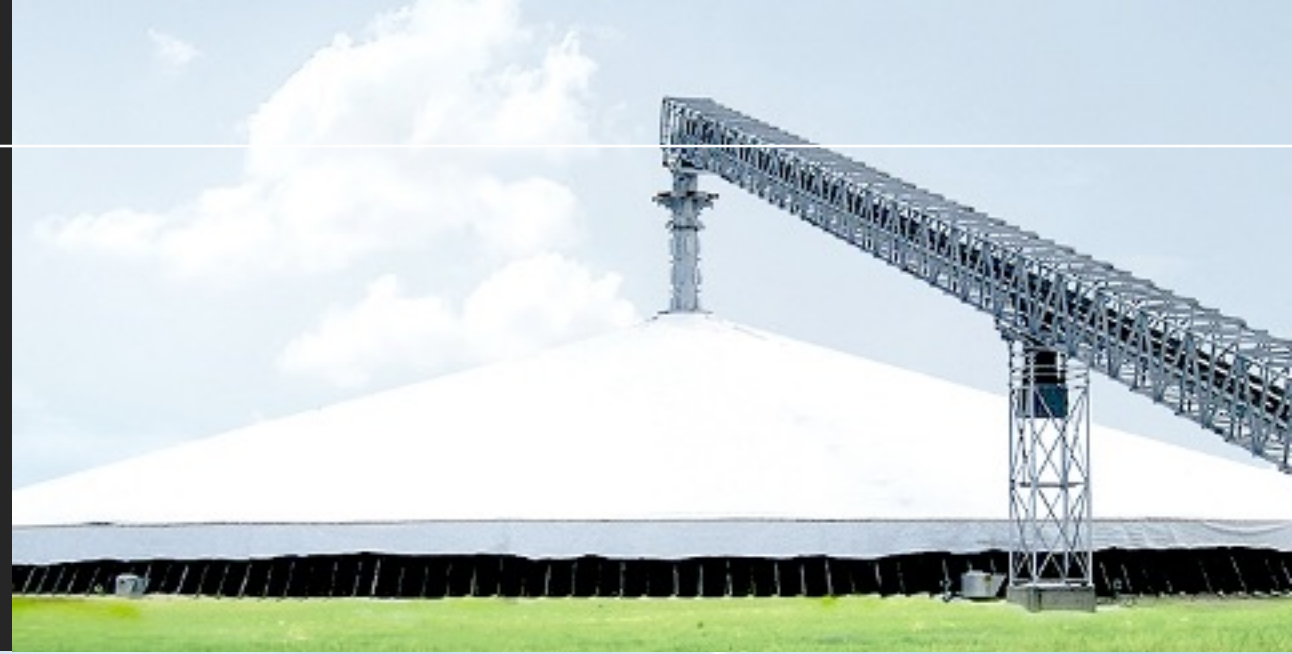
Hopper Bottom Bins

- Up to 14.55 m (48') in diameter
- Up to 3,204 mt in capacity
- 37, 40, 45 and 60 degree hopper cones
- Z350, Z450 & Z600 galvanized coating



TEMPORARY STORAGE

- Round and rectangular configurations
- Aeration & Tarps
- 1.2 m, 1.6 m and 2.7 m wall height
- Modular



TOWERS & CATWALKS

- Galvanized
- Custom Engineered
- Multiple support frame options



AERATION

- Centrifugal Fans up to 100 hp
- Axial Fans up to 10 hp
- High and Low Speed Fans
- Roof Exhausters



STORAGE AERATION MATTERS

Proper drying and aeration is key when it comes to protecting the grain inside your bin. Whether you are natural air drying or aerating, AGI offers centrifugal fans and heaters to match your operation.



DRYERS

- Extremely fuel efficient
- Superior grain quality
- Flexible operation
- Suitable for all grains
- Ultra quiet fans



A BETTER WAY TO CONDITION

AGI NECO's innovative drying system protects your grain quality, so you can maximize your profits.



DUST COLLECTION & FILTERS

- Bag Houses
- Pulse Jet
- Reverse Low-Pressure Systems
- Cyclones
- Airlocks
- Dust Fans



LOOP SYSTEM

- The UHMW Paddle keeps grain flowing gently and evenly from inlet to discharge source
- Paddle spaced every 10.5" for less grain damage than traditional auger flighted systems
- Versatile closed loop design
- Reduced drying costs by blending higher moisture and dried grain from one bin to another
- Multiple sizes available from 6" to 12" Loop



SOLUTIONS FOR NON-FREE FLOWING MATERIALS

Silos for non-free flowing materials are the future, they offer many advantages over traditional storage systems:

- **Industrial safety:** they prevent hazards and contamination risks
- **Space reduction:** they optimize the use of vertical space and reduce the storage area.
- **Easier product handling:** they facilitate the discharge and transport of materials with special characteristics, such as sticky, cohesive or abrasive.

AGI is one of the few companies in the world developing this innovative technology in collaboration with top companies in the industry.

We can offer smooth or corrugated walls and conical or flat bottom silos, with capacities up to 5000Ton



CUSTOMIZE YOUR GRAIN

AGI has custom handling solutions for farm and commercial operations, including AGI Hutchinson's grain pumps and loop systems. The custom closed-loop design offers the versatility to create a complete load-in/load-out system that provides recirculation capabilities and allows one or more bins to be loaded at a time, making moving grain fast and efficient, with lower drying times.



PERMANENT HANDLING

Bucket Elevators

- Powder coat, plus coat, galvanized and stainless steel

Chain Conveyors

- Powder coat, galvanized and stainless steel

Enclosed Belt Conveyors

- Totally enclosed, self-cleaning and self-reloading
- Bearings isolated from internal atmosphere of conveyor
- Powder coat, galvanized, stainless steel
- Fixed and moveable trippers
- Integrated slide gates and two-way valves

Open Belt Conveyors

- Galvanized
- Moveable tripper



TRAMCO CONVEYORS

TRAMCO conveyors meet the criteria for delivering product for various industries such as chemical, coal, food and grain, mining, plastic, pulp, rubber and paper, or solid waste and recycling. Founded in 1967, TRAMCO manufactures premier bulk material handling equipment primarily for the grain and oilseed processing industry.



TRAMCO G-Model

- Horizontal Conveyor with multiple self-feeding inlets and multiple outlets
- Incline conveyor with multiple inlets and multiple outlets
- Curved conveyor with incline and multiple inlets



TRAMCO Bulk-Flo

The TRAMCO BULK-FLO™ heavy-duty chain conveyor is designed to handle a wide variety of challenging materials such as wet and sticky products, those with varying sizes and densities, and abrasive or corrosive materials.

The unsurpassed quality and rugged construction of the BULK-FLO™ conveyor series assures years of dependable service even under the most severe conditions.



TRAMCO RB-Model

The TRAMCO Model RB Conveyor is specifically designed for the handling of soft stock or materials that are easily crumbled or broken, such as seed, feed, pellets and other fragile materials.

All components are jig welded to ensure their interchangeability and are checked for precise fit by the strict TRAMCO 100% inspection policy.

HI ROLLER

- Hi Roller® manufactures a line of premier commercial enclosed, dust-tight and self-reloading conveyors, designed for installation in grain handling facilities, soy and corn processing operations and industrial operations.
- They specialize exclusively in the design and application of conveyors which will not only contain dust and spilled materials but will also automatically reload that material back on the carrying surface of the belt.



NORTH AMERICA - COMMERCIAL



Clay Center, Kansas



Hamilton, Ontario



Red Cloud, Nebraska



Kalama, Washington

FEED

AGI 



AGI FEED OFFERINGS



**AGI FLEXmill
System**

<50,000 MT / Year Solutions

**Complete
Solution with
Partners**

>50,000 MT / Year Solutions

FLEXMILL OVERVIEW

Product Description

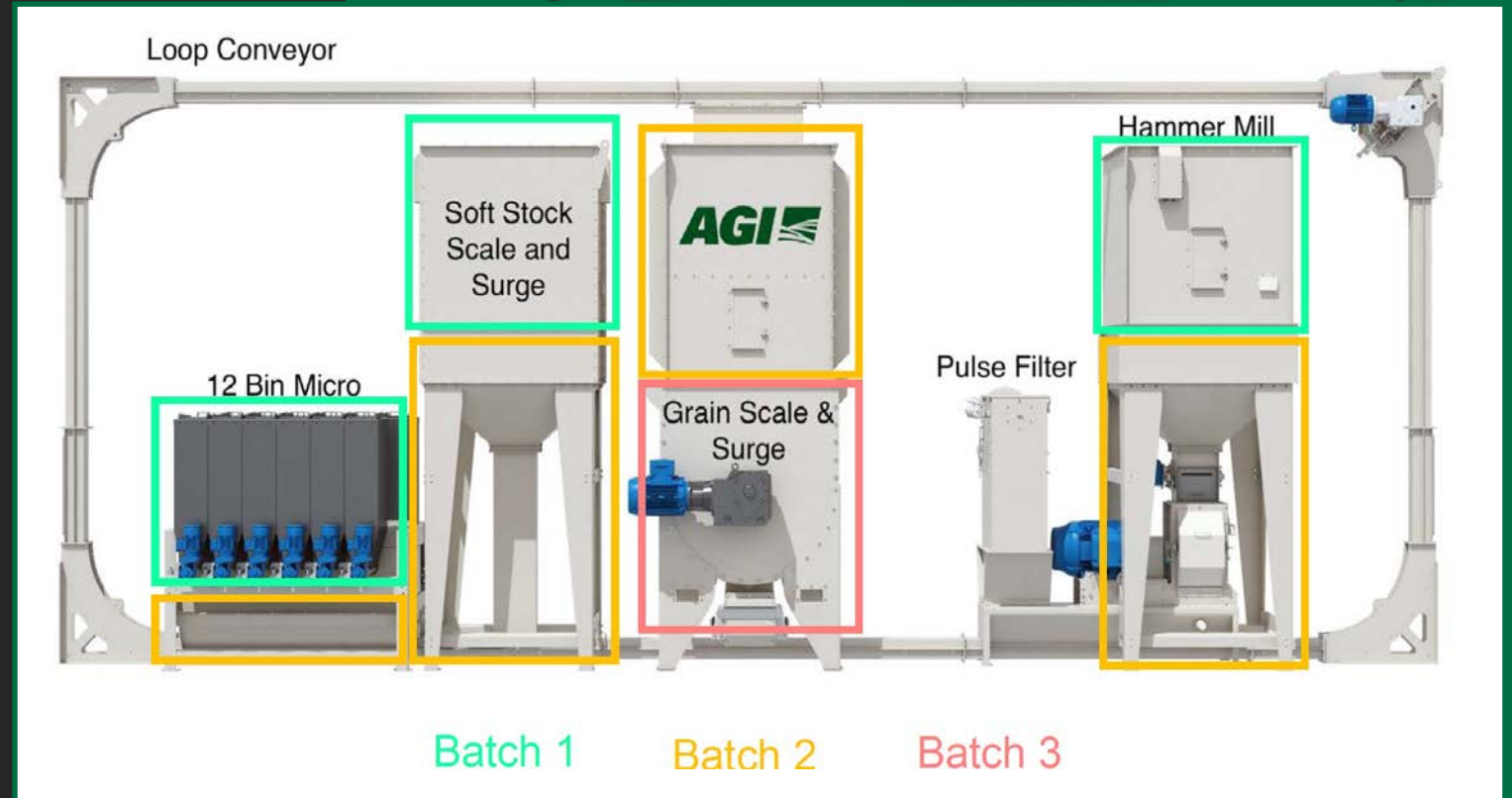
- Containerized system designed for **poultry** and **swine** feed applications
 - The FLEXmill can produce feed for bovines and other ruminants with modifications
 - Requires minimal installation onsite
- Feed production capacity of 8-12 MT/hr dependent on ingredients and rations
- In addition to the FLEXmill, AGI provides the additional storage and handling solutions to create a complete feed mill system
- The FLEXmill is currently manufactured in Oak Bluff, Manitoba with plans in place to transfer manufacturing capabilities to other AGI production facilities (Brazil, India)



FLEXMILL OVERVIEW (CONT'D)

Product List

- 46 Cf 1000 Kg Grain Scale
- 46 Cf Grain Surge
- Pocket Feeder
- 40-75 HP Hammer Mill
- 1000 Cfm Air Filter
- 12 Bin Micro System
- 750 Kg Soft Stock Scale
- 46 Cf Soft Stock Surge
- 70 Cf (1 Mt) Mixer Surge
- 70 Cf (1 Mt) Mixer
- 6" Loop Conveyor
- 5-Minute Overview video: [Weblink](#)



COMPLETE FEED OFFERING OVERVIEW

- **Can be utilized for all feed outputs:**
 - Micro-premix (VTM) / supplements
 - Premix
 - Basemix
 - Complete feed
- **For all applications:**
 - Ruminant
 - Swine
 - Poultry
 - Aquaculture
- **Across the following capabilities**
 - Process and project engineering
 - Project management
 - Standard and customized equipment manufacturing
 - Installation and commissioning services

AGI can Offer

**Individual
Equipment and
Services**

**Integrated
Solutions**

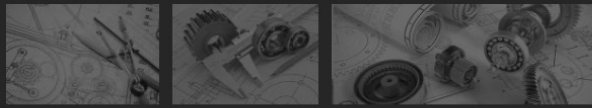
**Turnkey
Solutions**

KEY CAPABILITIES



Concept Design & Engineering

- *Pre-engineering studies*
- *Process flow layout*
- *Master plant design*
- *Project schedule*
- *Procurement and equipment selection*
- *Project estimates*



Installation Supervision & Commissioning

- *Project management services*
- *Client representative services*
- *Storage, material handling, and processing equipment*
- *Commissioning support*
- *Controls integration*



Training & Aftermarket Support

- *Start-up and hand-over services*
- *Spare parts & maintenance packages*
- *Operator training*
- *De-bottlenecking studies*
- *Facility expansion efforts*



AGI is committed to supporting our clients through every phase of the project

COMPLETE FEED OFFERING – KEY REFERENCE SITES

- **Country:** France
- **Capacity:** 10 tonnes / hour
- **Specialty:** Aquaculture
- **Description:** AGI provided a pre-engineering study, receiving system, material handling, and the packaging solution



(Aqua feed facility)



(Material handling equipment)



(Distributors and conveyors)

- **Country:** Algeria
- **Capacity:** 30 tonnes / hour
- **Specialty:** Animal feed
- **Description:** AGI provided the automation solution, mixer, and installation and commissioning supervision



(Feed mill tower)



(Mixer)

END TO END SOLUTIONS

CATEGORY	OFFERING		
Pre-Engineering, Engineering and Services	<ul style="list-style-type: none"> • Flow diagrams • Project management • Installation supervision 	<ul style="list-style-type: none"> • Custom solutions • Design studies 	<ul style="list-style-type: none"> • General arrangement drawings • Equipment specifications
Material Handling	<ul style="list-style-type: none"> • Belt conveyor • Bucket elevators • Distributors 	<ul style="list-style-type: none"> • Drag conveyors • Gates • Round-bottom (RB) conveyors 	<ul style="list-style-type: none"> • Screw conveyors / feeders • Valves
Storage	<ul style="list-style-type: none"> • Bolted corrugated bins • Bolted galvanized grain bins • Bolted smoothwall galvanized hoppers 	<ul style="list-style-type: none"> • Bulk bag dosing (Tote) • Liquid tanks (oils / tallow) • Micro dosing systems 	<ul style="list-style-type: none"> • Overhead square bins • Tote systems • Welded round smoothwall bins
Processing Equipment & Systems <i>(AGI or Third-Party)</i>	<ul style="list-style-type: none"> • Liquid ingredient pumps • Mixing systems • Scales & weigh hoppers 	<ul style="list-style-type: none"> • Pelleting systems • Extrusion systems 	<ul style="list-style-type: none"> • Drying systems • Packaging systems
Dust Collection	<ul style="list-style-type: none"> • Spot filters • Cyclones 	<ul style="list-style-type: none"> • Bag houses 	
Technology	<ul style="list-style-type: none"> • Hazard monitoring solutions 	<ul style="list-style-type: none"> • Grain management systems 	

A photograph of a fertilizer plant with a blue tint. The image shows a large industrial building with a corrugated metal roof and several tall, cylindrical silos. The word "FERTILIZER" is written in large, white, bold, italicized letters across the middle of the image. The background is a clear blue sky.

FERTILIZER

DRY FERTILIZER

The Declining Weight Blend System has revolutionized the fertilizer blending industry. Because of its 304 stainless steel base construction and unlimited versatility, the Declining Weight Blend System is the fastest, most accurate multi-feed blend systems available



99.5% BLEND ACCURACY

AGI FERTILIZER SYSTEMS

AGI 

DECLINING WEIGHT | BATCH BLENDING | LIQUID HANDLING
RECEIVING & LOADOUT | SPECIALTY | AUTOMATION CONTROLS | TOWERS



AGI FERTILIZER

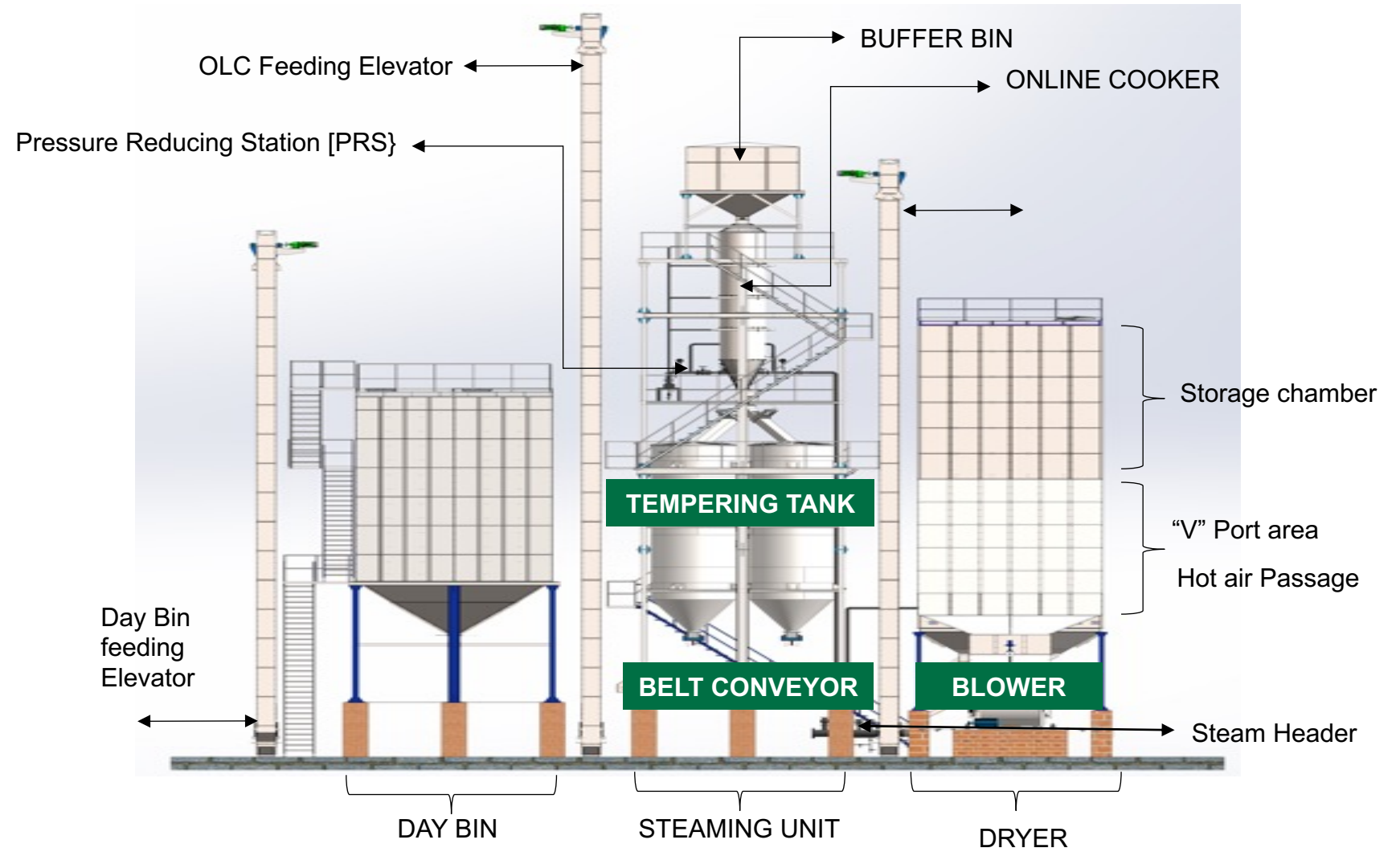
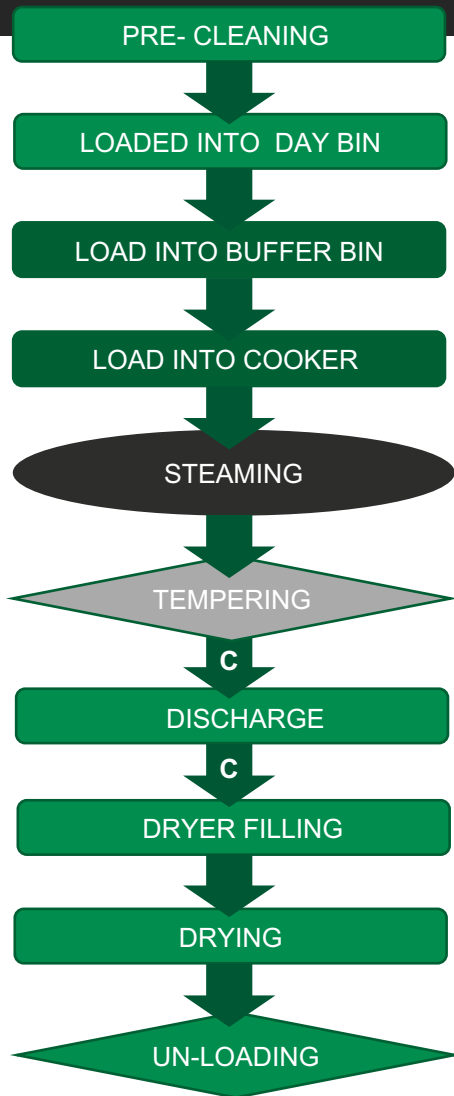
AGI Fertilizer Systems designs, manufactures, installs, and maintains fertilizer handling equipment that can be scaled to fit your unique needs and requirements. AGI specializes in delivering complete solutions that allow for superior receiving, blending, conveying and loading for customer applications



RICE MILLING



STEAM PROCESS FLOW



RICE MILLING

AGI MILLTEC Rice milling machines are designed to provide higher yield and profitability. Our innovative rice processing solutions minimize in-process waste, reduce manpower, and maintain hygienic standards in food processing. Our company offers customized project solutions from the concept stage to the production stage, keeping the costs at a minimum, and assuring on-time delivery.

We design, manufacture, and supply a complete range of rice milling machines including cleaning, husking, whitening, polishing, grading, sorting and packaging machines to meet rice processing requirements.

Advantages

- Completely closed and dustproof construction
- Fully welded construction
- Metal sieve boat & wooden sieves frame
- Rugged design, long lasting and low maintenance
- Inbuilt blower for aspiration system
- Fitted with Round Scalperator (Separate drive) to remove sticks & straws



PAR BOILING & DRYING

Parboiling

Parboiling is the process of hydrothermal treatment on paddy which is done in three steps: Soaking, steaming and drying.

The parboiled paddy needs to be dried to bring to the desired ideal moisture level of 14% before milling.

Dryer

There are two types of paddy dryers available- LSU dryers with batch type drying and other is LSU dryers with continuous type drying.

Packaged boiler

Fully automatic solid fuel fired steam boiler which is designed as per IBR (Indian Boiler Regulations) and has high thermal efficiency.





INTERNATIONAL

AGI's International operations span across 5 specific regions: Brazil, LATAM, EMEA, India and APAC. Our global manufacturing from our 35 facilities, engineers and sales team members around the world allow AGI to offer highly-specialized services as well as turnkey solutions across 6 continents. With sales in over 95 countries, AGI's International team members deliver our complete range of equipment and services to farm and commercial customers.



AGD Timbues, Argentina



Avipechichal, Ecuador



Cargill Cedrales, Paraguay



Cofco Junin, Argentina



Pofasa, Ecuador



Inolsa, Paraguay

INTERNATIONAL



ADM, Argentina



Ecuabulk, Ecuador



El Pechugon, Paraguay



ADM, Argentina



TGM Uruguay



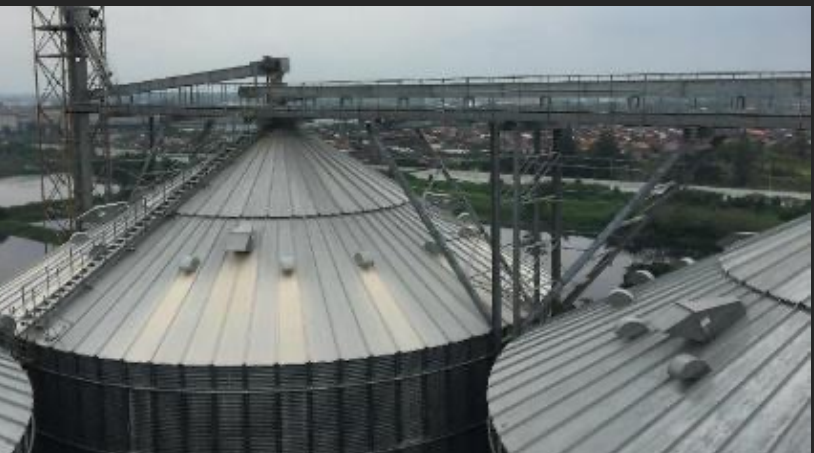
Horsham, Australia



Poland



Ukraine



Indonesia



Romania



Abadiania – GO, Brasil



THANK YOU

www.aggrowth.com

