

AGI

AGI

AERATION AND CONDITIONING

AGI



PROTECT YOUR INVESTMENTS

You invest in a bin to protect your grain from the elements, but what's protecting your grain from spoilage inside? You can trust AGI to protect your investment with fans and heaters designed to manage airflow inside the bin to keep grain conditioned and prevent spoilage. Engineered for long-lasting applications and simple, smooth operation, AGI has a complete lineup of aeration and conditioning equipment to fit your needs.



LOW SPEED CENTRIFUGAL FANS

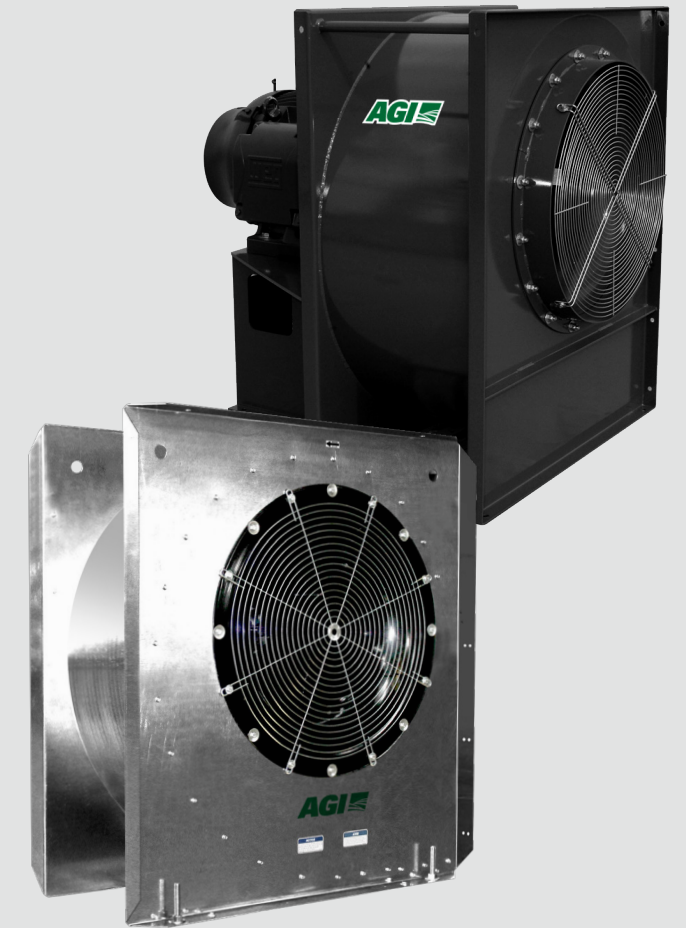
AGI low speed centrifugal fans are designed to maximize airflow at lower to medium static pressures.

AGI FEATURES

- 5-50HP galvanized steel housing
- Totally enclosed, fan-cooled, electric motors (TEFC)
- Precision-balanced airfoil blade wheel ensures maximum airflow and efficiency
- Adjustable feet allow fans to be leveled on a concrete pad or support stand
- Aerodynamically designed inlet cone
- Weatherproof electrical controls
- Control boxes wired to allow for easy addition of a transformer and easy connection with supplemental heaters and bin monitoring systems

AIRLANCO FEATURES

- 40-100HP painted steel housing with a backward incline wheel



Low Speed (1750 RPM) Air Deliveries (CFM)

Inches in static pressure

MODEL	HP	0	1	2	3	4	5	6	7	8	9	10	11	12
GGL-805**	5	9,500	8,900	7,650	6,700	6,000	5,200	3,700	2,000					
GGL-807**	7.5	12,100	11,500	10,600	9,700	9,000	7,900	6,700	4,250	2,000				
GGL-810**	10	16,050	15,100	14,200	13,300	12,300	11,300	10,100	7,800	3,270				
GGL-815**	15	18,100	17,000	16,200	15,200	14,300	12,700	11,700	11,100	8,750	4,000			
GGL-8203*	20	23,700	22,800	21,800	20,600	19,600	18,600	17,200	15,800	13,210	10,550	7,510	1,950	
GGL-8253*	25	24,100	23,700	22,700	21,700	20,900	20,000	19,000	17,700	15,250	12,380	10,000	4,550	
GGL-8303*	30	28,000	26,700	25,500	24,500	23,500	22,300	21,000	20,000	18,000	16,000	14,000	10,000	
GGL-8403*	40	30,400	30,400	29,670	28,630	27,340	26,160	24,840	23,410	20,310	19,450	17,590	15,240	
GGL-8503*	50	34,100	33,300	32,250	31,200	30,200	29,100	28,000	26,800	25,600	24,500	23,200	21,700	19,700

Asterisks are placeholders for phase and voltage codes of the fan

Low Speed (1750 RPM) Air Deliveries (CFM)

Inches in static pressure

MODEL	HP	0	2	3	4	5	6	7	8
CL-3040	40	29,680	28,170	27,140	26,150	25,100	24,000	22,790	21,310
CL-3340	40	25,190	24,180	23,430	22,700	21,980	21,210	20,420	19,580
CL-3350	50	31,470	30,220	29,280	28,360	27,470	26,500	25,520	24,470
CL-3360	60	37,800	36,300	35,160	34,070	32,990	31,830	30,650	29,390
CL-3660	60	31,380	30,370	29,660	28,890	28,150	27,410	26,610	25,790
CL-3675	75	39,190	37,930	37,040	36,080	35,150	34,290	33,230	32,200
CL-36100	100	52,280	50,600	49,420	48,140	46,900	45,670	44,340	42,960

Fan performance: airflow (CFM) at static pressure in water gauge

HIGH SPEED CENTRIFUGAL FANS

AGI high speed centrifugal fans are designed to maximize airflow at medium to high static pressures. Perfect for high grain depths or higher density commodities.

AGI FEATURES

- 3-15HP powder coated steel housing
- 20-40HP galvanized steel housing
- Totally enclosed, fan-cooled, electric motors (TEFC)
- Precision-balanced airfoil blade wheel ensures maximum airflow and efficiency
- Adjustable feet on 20-40HP units allow the fan to be leveled on a concrete pad or support stand
- Aerodynamically designed inlet cone
- Weatherproof electrical controls

AIRLANCO FEATURES

- 20-40HP painted steel housing with a backward incline wheel



High Speed (3450 RPM) Air Deliveries (CFM)

MODEL	HP	Inches in static pressure																		
		0	2	4	6	8	10	12	14	16	18	20								
GGF-803**	3	3,710	3,430	3,120	2,740	2,260														
GGF-805**	5	4,930	4,800	4,100	3,530	3,140	1,980													
GGF-807**	7.5	5,750	5,500	5,140	4,560	4,140	3,480	2,410												
GGF-810**	10	7,320	6,950	6,260	5,840	5,500	5,150	4,750	4,240											
GGF-8153*	15	9,280	8,920	8,450	7,950	7,380	6,630	6,050	5,200											
GGF-8203*	20	9,300	9,060	8,670	8,130	7,780	7,340	6,840	6,240	5,570	4,720	3,700								
GGF-8253*	25	10,850	10,520	9,930	9,380	8,710	8,070	7,410	6,570	5,560	4,230	3,200								
GGF-8303*	30	13,950	13,540	12,990	12,310	11,630	10,560	9,870	9,030	8,080	7,130	6,000								
GGF-8403*	40	16,850	16,240	15,500	14,820	14,090	13,240	11,490	10,670	9,650	9,010	7,800								

Asterisks are placeholders for phase and voltage codes of the fan



IN-LINE CENTRIFUGAL FANS

AGI in-line centrifugal fans are designed to maximize airflow at low to medium static pressures in cereal grains. These fans are a versatile option for both hopper bottom and flat bottom bin aeration systems.

FEATURES

- Available in 3-15HP sizes
- 18", 24" and 28" powder coated steel housing
- Precision balanced steel fan wheel ensures maximum airflow and efficiency
- Aerodynamically designed inlet cone
- Weatherproof electrical controls
- Air-over cooled motor (ODP)



High Speed (3350 RPM) Air Deliveries (CFM)

MODEL	HP	Inches in static pressure																			
		0	2	4	6	8	10	11	12	13	14	15	16	17	18	19	20	21	22		
CH-2040	40	17,310	16,860	16,230	15,540	14,860	14,100	13,740	13,290	12,820	12,820	11,710	11,130	9,970	8,140						
CH-2240	40	13,690	13,410	13,070	12,630	12,200	11,780	11,540	11,300	11,070	10,850	10,560	10,280	9,950	9,620	9,260	8,890	8,320	7,370		
CH-2250	50	17,100	16,760	16,330	15,780	15,240	14,710	14,420	14,120	13,830	13,550	13,200	12,850	12,440	12,020	11,570	11,110	10,390	9,210		
CH-2260	60	20,520	20,110	19,590	18,930	18,290	17,650	17,300	16,940	16,600	16,260	15,840	15,410	14,920	14,420	13,880	13,330	12,470	11,050		

High Speed (3350 RPM) Air Deliveries (CFM)

MODEL	HP	Inches in static pressure																			
		0	5	10	15	20	22	24	26	27	28	29	30	31	32	33	36	39	42		
CH-2440	40	11,530	10,970	10,210	9,400	8,420	7,940	7,420	6,290												
CH-2450	50	14,400	13,700	12,740	11,730	10,520	9,910	9,260	7,850												
CH-2460	60	17,300	16,460	15,310	14,100	12,630	11,900	11,130	9,440												
CH-2475	75	21,640	20,580	19,140	17,630	15,800	14,890	13,910	11,800												
CH-2750	50	11,450	11,050	10,440	9,840	9,190	8,900	8,590	8,210	8,020	7,820	7,620	7,420	7,100	7,030	6,090					
CH-2760	60	13,730	13,250	12,520	11,810	11,020	10,680	10,300	9,850	9,620	9,380	9,140	8,890	8,520	7,990	7,300					
CH-2775	75	17,180	16,570	15,660	14,770	13,800	13,360	12,880	12,320	12,040	11,730	11,430	11,120	10,660	10,000	9,130					
CH-27100	100	22,880	22,070	20,860	19,670	18,370	17,790	17,160	16,410	16,030	15,630	15,220	14,820	14,010	13,310	12,150					
CH-3075	75	13,850	13,460	12,910	12,320	11,720	11,460	11,210	10,960	10,810	10,650	10,500	10,340	10,160	9,970	9,790	9,210	8,370	6,670		
CH-30100	100	18,460	17,940	17,200	16,430	15,620	15,270	14,940	14,610	14,410	14,200	14,000	13,540	13,290	13,050	12,270	11,160	8,890			

Fan performance: airflow (CFM) at static pressure in water gauge

In-Line (3450 RPM) Air Deliveries (CFM)

MODEL	HP	Inches in static pressure											
		0	2	4	6	8	10	12	14				
GGI-803**	3	4,100	3,690	3,020	2,130								
GGI-805**	5	5,750	5,430	4,790	4,050	1,600							
GGI-807**	7.5	6,980	6,550	5,950	5,220	4,340	1,560						
GGI-810**	10	8,020	7,750	7,220	6,550	5,850	4,960	3,640	1,000				
GGI-815**	15	9,390	8,900	8,340	7,710	6,940	6,300	5,340	1,390				

Fan performance: airflow (CFM) at static pressure in water gauge

Asterisks are placeholders for phase and voltage codes of the fan



AXIAL FANS

AGI axial fans are engineered for efficient, high-volume air delivery in low to medium storage depths.

AGI FEATURES

- Available in 3-15HP
- Statically and dynamically balanced
- Totally enclosed air-over motors (TEAO)
- 18", 24" and 28" galvanized steel housing
- Light weight glass-reinforced polypropylene (GRP) propellers

AIRLANCO FEATURES

- Single and two-stage fan options available
- Axial airfoil has two different propellers cast of shatter-resistant aluminum alloy
- Self-locking mechanism



Vane Axial (3450 RPM) Air Deliveries (CFM)

MODEL	HP	0	1	2	3	4	5	6	7	8
GGX-803**	3	5,630	5,150	4,310	3,320	2,180	1,420	870		
GGX-807**	5-7	11,090	10,450	9,280	7,910	6,160	4,350	3,060	1,790	
GGX-810**	7.5-10	13,180	12,600	11,280	9,830	8,040	5,720	4,130	2,530	1,440
GGX-815**	10-15	17,530	16,980	15,680	14,170	12,490	10,610	8,430	5,140	2,200

Asterisks are placeholders for phase and voltage codes of the fan

Axial Fans Air Deliveries (CFM)

Inches in static pressure

MODEL	HP	0.75	1.00	1.50	2.00	2.50	3.00	3.50	4.00	4.50	5.00	5.50	6.00	6.50	7.00	7.50
12" Axial	.75	1,330	1,150	775	555											
14" Axial	1	2,500	2,340	1,850	1,275	840										
16" Axial	1.5	3,780	3,625	3,150	2,330	1,750	1,400									
18" Axial	1.5	4,975	4,825	4,450	3,625	2,580	1,425									
18" Axial	3	6,225	6,075	5,700	5,160	4,325	3,125	2,300	1,550	1,275						
24" Axial	5	10,725	10,400	9,600	8,725	7,775	6,800	5,630	4,575	3,625	2,700	1,950				
24" Axial	7.5-10	13,450	13,280	12,750	12,150	11,350	10,300	9,225	8,150	6,975	5,710	4,300	3,150			
28" Axial	10-15	17,450	17,170	16,575	15,600	14,525	13,425	12,375	11,200	9,680	8,500	7,375	6,500	5,600	4,825	3,920

Two Stage Axial Fan (CFM)

Inches in static pressure

MODEL	HP	0.75	1.00	1.50	2.00	2.50	3.00	3.50	4.00	4.50	5.00	5.50	6.00	6.50	7.00	7.50
14" 2-Stage Axial	1.5	3,000	2,950	2,800	2,640	2,360	2,150	1,840	1,725	1,430	1,175	950	800	580		
18" 2-Stage Axial	3	5,710	5,610	5,310	5,000	4,670	4,250	3,800	3,400	2,940	2,480	2,000	1,700	1,310	1,050	

Fan performance: airflow (CFM) at static pressure in water gauge

LOW TEMPERATURE UPSTREAM HEATERS

AGI low temperature upstream heaters are your solution when a slight rise in temperature is required to help reduce humidity in your bin. Low temperature heaters are designed to provide a consistent amount of heat which results in less cycling and increases the life of components.

- Temperature rise ranges from 5°C to 15°C (10°F to 30°F)
- Perfect solution for low temperature grain drying when less than 11°C (20°F) temperature rise is required
- Built-in adjustable brackets fit a variety of centrifugal fans
- Built-in safety and troubleshooting features allow for safe operation and easy problem diagnosis
- Adjustable airflow baffles allow for successful ignition at low burner pressures
- Remotely mounted control box
- Industrial-grade ignitor and flame probe provide consistent lighting and long service life

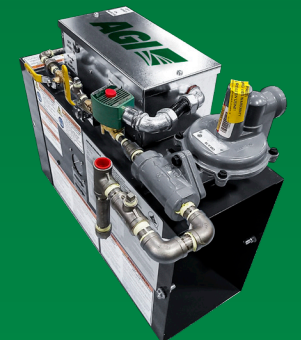


Low temperature upstream heater

LOW TEMPERATURE DOWNSTREAM HEATERS

AGI low temperature downstream heaters are designed to supplement natural air drying systems when ambient conditions are not favorable. The heater is easily installed between the fan and the bin.

- Temperature rise ranges from 10°C to 12°C (18°F to 22°F) on 60K and 100K BTU models and from 25°C to 30°C (45°F to 55°F) on 200K BTU models.
- Available for in-line and high speed centrifugal fans
- Electronic ignition
- High heat limit safety switches
- Airflow and pressure sensing safety devices included



Low temperature downstream heater

HIGH TEMPERATURE DOWNSTREAM HEATERS

AGI high temperature downstream heaters allow for crops to be efficiently and effectively dried inside of your grain bin. Recommended to be used along with a stirrator system.

- Temperature rise ranges from 15°C to 80°C (30°F to 140°F)*
- Adjustable vaporizer on liquid propane models
- Built-in safety and troubleshooting features allow for safe operation and easy problem diagnosis
- Y-strainers keep fuel impurities out of valves
- Transitions and adaptor plates available to match the appropriate fan/heater combination



High temperature downstream heater

HIGH TEMPERATURE DOWNSTREAM AXIAL HEATERS

Axial heaters are designed for high temperature drying of corn and pulse crops. These heaters accommodate the high airflow of axial-bladed crop drying fans.

- Temperature rise ranges from 15°C to 80°C (30°F to 140°F)*
- Adjustable vaporizer on liquid propane models
- Built-in safety and troubleshooting features allow for safe operation and easy problem diagnosis
- Industrial-grade ignitor and flame probe provide consistent lighting and long service life



High temperature downstream axial heater

*Maximum recommended air input temperature is 80°C or 140°F

Low Temperature Upstream Heaters

PART #	FUEL TYPE		CONTROL TYPE			RECOMMENDED FAN	BTU OUTPUT
	VAPOUR PROPANE	NATURAL GAS	MANUAL ON/OFF	THERM	THERM/HUMID		
GGH-8390V	X	X	X			10-40HP low speed	37,500/346,000
GGH-8390VO	X	X		X		10-40HP low speed	37,500/346,000
GGH-8390VU	X	X			X	10-40HP low speed	37,500/346,000

Upstream heaters include orifices for both natural gas and vapour propane operation

Low Temperature Downstream Heaters

PART #	FUEL TYPE		CONTROL TYPE		RECOMMENDED FAN	INLET SIZE	BTU OUTPUT
	VAPOUR PROPANE	NATURAL GAS	MANUAL ON/OFF				
GGH-8350	X	X	X		3HP high speed	9" x 14"	60,000
GGH-8351	X	X	X		5, 7HP high speed	9" x 14"	100,000
GGH-8352	X	X	X		3HP in-line	18" round	60,000
GGH-8353	X	X	X		5, 7HP in-line	24" round	100,000
GGH-8354	X	X	X		10, 15HP high speed	12" x 17"	200,000
GGH-8355	X	X	X		10, 15HP in-line	28" round	200,000

Fuel type selection can be changed between natural gas and vapour propane by turning a valve on the heater

High Temperature Downstream Heaters

PART #	FUEL TYPE		CONTROL TYPE			RECOMMENDED FAN	INLET SIZE	BTU OUTPUT
	LIQUID PROPANE	NATURAL GAS	ON/OFF	HIGH/LOW	MODULATING			
GGH-8371LO	X		X			5, 7, 10, 14, 15HP low speed	19.75" x 33.5"	200,000/2,450,000
GGH-8371LH	X			X				200,000/2,450,000
GGH-8371LM	X				X			200,000/2,450,000
GGH-8371NO		X	X					200,000/2,350,000
GGH-8371NH		X		X				200,000/2,350,000
GGH-8371NM		X			X			200,000/2,350,000
GGH-8372LO	X		X			20, 25, 30, 40, 50HP low speed	26" x 36.5"	603,000/4,480,000
GGH-8372LH	X			X				603,000/4,480,000
GGH-8372LM	X				X			603,000/4,480,000
GGH-8372NO		X	X					704,000/4,230,000
GGH-8372NH		X		X				704,000/4,230,000
GGH-8372NM		X			X			704,000/4,230,000

Part numbers GGH-xxxxL/Nx represent the gas type L - liquid propane, N - natural gas
 Part numbers GGH-xxxxO/H/M represent the control type: O - on/off, H - high/low, M - modulating
 *Maximum recommended air input temperature is 80°C or 140°F

High Temperature Downstream Axial Heaters

PART #	FUEL TYPE		THERMOSTAT CONTROLLED	RECOMMENDED FAN	BTU OUTPUT
	LIQUID PROPANE	NATURAL GAS			
GGH-8361LO	X		X	24" axial	309,000/2,000,000
GGH-8361NO		X	X	24" axial	381,000/2,200,000
GGH-8362LO	X		X	28" axial	383,500/3,102,000
GGH-8362NO		X	X	28" axial	381,000/3,158,000

*Maximum recommended air input temperature is 80°C or 140°F



The Rocket is the premium hopper aeration system. Designed to facilitate both conditioning and natural air drying applications. The Retro Rocket allows you to retrofit an existing hopper bin.

FEATURES

- Air delivery penetrates the core of the bin
- Provides uniform airflow throughout the grain mass
- The Rocket design minimizes additional static pressure created by the duct system
- Greater maximum airflow capacity than other types of duct systems
- Larger grain contact area to distribute air more efficiently into the grain mass
- Unique Retro Rocket folding design allows unit to be inserted through the inspection hatch, eliminating need to remove bin wall or cone sheet panels for installation



AGI Hopper Aeration Systems - Rockets (A)

PART #	DESCRIPTION	LOUVERED AREA (SQ. FT.)	CONTACT AREA (SQ. FT.) (C)	AIRFLOW CAPACITY (CFM) (D)	MAX. BIN DIAMETER (FT.)	MAX. BIN WALL HEIGHT (FT.)	MAX. HOPPER ANGLE
GGR-8736	6000 6' Rocket	20	22	2372	14'	16'	40°
GGR-8737	7000 4' Rocket	45	36	3362	19'	30'	40°
GGR-8738	7000 6' Rocket	69	50	4781	19'	30'	40°
GGR-8750	7000 6' HD Rocket	69	50	4781	19'	33'	45°
GGR-8739	7000 8' Rocket	93	64	6170	19'	22'	40°
GGR-8740	8000 4' Rocket	67	59	5514	24'	30'	40°
GGR-8741	8000 6' Rocket	105	80	7671	24'	30'	40°
GGR-8742	8000 8' Rocket	142	102	9783	24'	22'	40°
GGR-8745	8000 8' HD Rocket	142	102	9783	27'	33'	40°
GGR-8743	8000 4' Commercial (B)	67	59	5514	27'	40'	45°
GGR-8744	8000 6' Commercial (B)	105	80	7671	24'/27'	40'/33'	45°
GRS-7004	Retro Rocket 4'	45	30	3546	19'	22'	40°
GRS-7006	Retro Rocket 6'	68	44	4868	19'	22'	40°

A - Specifications are for farm use in aeration or natural air drying applications with 1 or 2 duty cycles per year
 • For use in other applications, please contact the factory for recommendations. (e.g. wet holding bins, high product turns)
 B - Commercial Rockets are used in taller bins, steeper cones and high product turns
 C - Contact area is the area in which the duct makes contact with the grain and can effectively distribute air to the the grain mass
 D - Airflow capacity is calculated at 1000 cfm/sq. ft. open area

HORIZONTAL DUCT SYSTEM

Designed as a versatile grain conditioning solution for hopper bottom bins.

FEATURES

- For use in 14' to 24' hoppers
- Downward facing louvers that provide improved clean-out
- Available in modular 3', 4', 6', 7' and 8' sections to adapt to various bin diameters
- Support frame not included, supplied by cone manufacturer



Horizontal Aeration Tube

PART #	DESCRIPTION	LOUVERED AREA (SQ. FT.)	CONTACT AREA (SQ. FT.) (A)	AIRFLOW CAPACITY (CFM) (B)	DUCT DIAMETER (INCHES)	MAX. BIN WALL HEIGHT (FT.)	MAX. HOPPER ANGLE
GGR-8137	GG 9000-3' tube ext	12	14	679	18"	22'	40°
GGR-8138	GG 9000-4' tube ext	16	19	915	18"	22'	40°
GGR-8139	GG 9000-6' tube w/cap	24	28	1358	18"	22'	40°
GGR-8140	GG 9000-7' tube w/cap	28	33	1594	18"	22'	40°
GGR-8141	GG 9000-8' tube w/cap	32	38	1829	18"	22'	40°
GGR-8129	GG-10000 3' tube ext	16	18	938	24"	22'	40°
GGR-8130	GG-10000 4' tube ext	22	25	1266	24"	22'	40°
GGR-8143	GG-10000 6' tube ext	33	37	1875	24"	22'	40°
GGR-8145	GG-10000 7' tube ext	38	43	2204	24"	22'	40°
GGR-8131	GG-10000 6' tube w/cap	33	37	1875	24"	22'	40°
GGR-8132	GG-10000 7' tube w/cap	38	43	2204	24"	22'	40°
GGR-8133	GG-10000 8' tube w/cap	44	49	2531	24"	22'	40°

A - Contact area is the area in which the duct makes contact with the grain and can effectively distribute air to the the grain mass
 B - Airflow capacity is calculated at 1000 cfm/sq. ft. open area

QUONSET SYSTEM

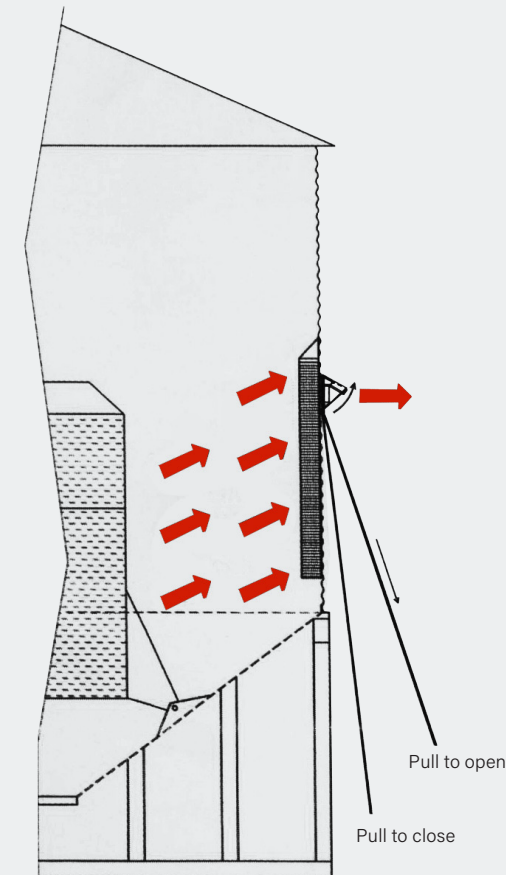
- Modular design allows flexible configurations for conditioning grain piles
- Contact AGI Nobleford for specifications and layout recommendations: 1-800-565-2840
- Round bin floor systems available for 14' to 30' bin diameters



OPTIONAL ACCESSORIES

WALL VENTS

- Designed to enhance the aeration system by reducing static pressure in the bin
- Reduces drying time by removing moisture from the lower half of the bin



SHUTTERS

- Block airflow back pressure when operating multiple fans on a bin

STATIC PRESSURE GAUGES & PLENUM THERMOMETER KITS

- Understand your airflow input conditions so you can make better informed aeration decisions

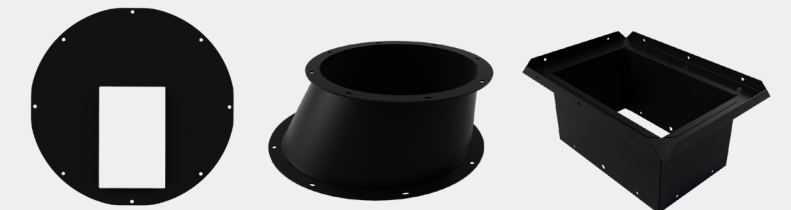
SILENCERS

- Reduces noise from fan operation



FAN SUPPORTS

- Engineered fan supports available for all fan types
- Fan supports offered for both flat bottom and hopper bottom bins
- Proper fan support reduces potential for vibration and premature wear on the fan



ADAPTORS AND TRANSITIONS

- AGI offers a wide selection of adaptors and transitions for all fan types
- Adapters and transitions offered for both flat bottom and hopper bottom bins



AGI is a global leader in supplying farm and commercial customers with the manufacturing, planning, and engineering of full equipment solutions for grain, seed, fertilizer, feed, and food. AGI's expertise enables the storage, blending, mixing, conveying, conditioning, processing, and protection of agricultural products and inputs worldwide.

Your safety is our highest priority.

Please read and understand the operator's manual and safety decals before using. Use and maintain products properly, and do not modify. Keep guards in place when operating and follow all product manuals and safety decals. For all AGI products, if guards, safety decals, or manuals are damaged or missing, contact your AGI sales or dealer representative for replacements. Images and information contained in this brochure are presented for general information.

The Rocket, Retro Rocket, AGI and the furrows symbol are trademarks belonging to Ag Growth International Inc.

198 Commerce Drive, Winnipeg, Manitoba, Canada R3P 0Z6

P 1.866.467.7207

     @aggrowthintl

AGGROWTH.COM